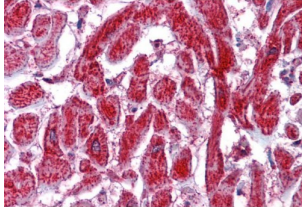


Protein Disulfide Isomerase A2 (PDIA2) Antibody

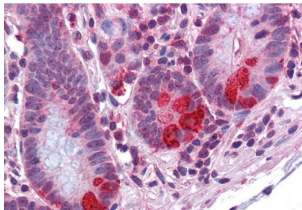
Catalogue No.: abx430455



abx430455 (3.75 µg/ml) staining of paraffin embedded Human Heart. Steamed antigen retrieval with citrate buffer pH 6, AP-staining.



abx430455 (0.03 µg/ml) staining of Human Pancreas lysate (35 µg protein in RIPA buffer). Detected by chemiluminescence.



abx430455 (3.75 µg/ml) staining of paraffin embedded Human Small Intestine. Steamed antigen retrieval with citrate buffer pH 6, AP-staining.

PDIA2 Antibody is a Goat Polyclonal antibody against PDIA2.

Target: Protein Disulfide Isomerase A2 (PDIA2)

Clonality: Polyclonal

Reactivity: Human

Tested Applications: P-ELISA, WB, IHC

Host: Goat

Recommended dilutions: P-ELISA: 1/64000. Optimal dilutions/concentrations should be determined by the end user.

Conjugation: Unconjugated

Datasheet

Version: 6.0.0
Revision date: 12 Dec 2024



Immunogen:	abx615115 - Internal region: C-NLETTKKYAPVD
Isotype:	IgG
Form:	Liquid
Purification:	Purified from goat serum by ammonium sulphate precipitation followed by antigen affinity chromatography using the immunizing peptide.
Storage:	Aliquot and store at -20°C. Avoid repeated freeze/thaw cycles.
Gene Symbol:	PDIA2
GeneID:	64714 69191
NCBI Accession:	NP_006840.2
Buffer:	Tris saline, pH 7.3, containing 0.02% sodium azide and 0.5% bovine serum albumin.
Concentration:	0.5 mg/ml
Note:	This product is for research use only.

For Reference Only