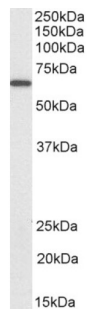


Protein Disulfide Isomerase A2 (PDIA2) Antibody (Biotin)

Catalogue No.: abx432127



Western blot analysis of Rat Pancreas lysate (35 µg protein in RIPA buffer) using biotin-conjugated Protein Disulfide Isomerase A2 (PDIA2) Antibody (0.03 µg/ml, 1 hour). Detected by chemiluminescence, using streptavidin-HRP and using NAP blocker as a substitute for skimmed milk.

PDIA2 Antibody is a Goat Polyclonal antibody against PDIA2 ([abx432126](#)) conjugated to biotin.

Target:	Protein Disulfide Isomerase A2 (PDIA2)
Clonality:	Polyclonal
Reactivity:	Human, Mouse, Rat
Tested Applications:	P-ELISA, WB
Host:	Goat
Recommended dilutions:	P-ELISA: 1/64000. Optimal dilutions/concentrations should be determined by the end user.
Conjugation:	Biotin
Immunogen:	Internal region (near C-Terminus), 477-481 AA: C-EYKSTRDLETFSK
Isotype:	IgG
Form:	Liquid
Purification:	Purified from goat serum by ammonium sulphate precipitation followed by antigen affinity chromatography using the immunizing peptide.
Storage:	Aliquot and store at -20°C. Avoid repeated freeze/thaw cycles.
Gene Symbol:	PDIA2
GeneID:	64714 69191 287164
NCBI Accession:	NP_006840.2

Datasheet

Version: 6.0.0

Revision date: 03 Apr 2025



Buffer: Tris saline, pH 7.3, containing 0.02% sodium azide and 0.5% bovine serum albumin.

Concentration: 0.5 mg/ml

Note: THIS PRODUCT IS FOR RESEARCH USE ONLY. NOT FOR USE IN DIAGNOSTIC, THERAPEUTIC OR COSMETIC PROCEDURES. NOT FOR HUMAN OR ANIMAL CONSUMPTION.

For Reference Only