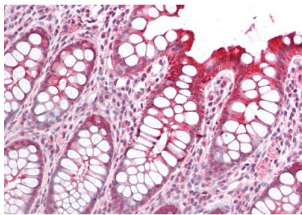


## Protein Interacting With Protein Kinase C Alpha 1 (PICK1) Antibody

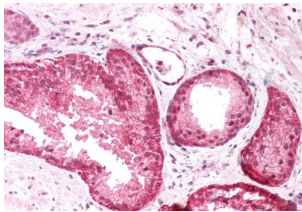
Catalogue No.: abx431506



abx431506 (1 µg/ml) staining of Mouse Brain lysate (35 µg protein in RIPA buffer). Detected by chemiluminescence.



abx431506 (5 µg/ml) staining of paraffin embedded Human Colon. Steamed antigen retrieval with citrate buffer pH 6, AP-staining.



abx431506 (5 µg/ml) staining of paraffin embedded Human Prostate. Steamed antigen retrieval with citrate buffer pH 6, AP-staining.

PICK1 Antibody is a Goat Polyclonal antibody against PICK1.

**Target:** Protein Interacting With Protein Kinase C Alpha 1 (PICK1)

**Clonality:** Polyclonal

**Reactivity:** Human, Mouse

**Tested Applications:** P-ELISA, WB, IHC

**Host:** Goat

**Recommended dilutions:** P-ELISA: 1/16000. Optimal dilutions/concentrations should be determined by the end user.

**Conjugation:** Unconjugated

# Datasheet

Version: 3.0.0  
Revision date: 13 Mar 2025



<b>Immunogen:</b>	<a href="#">abx269997</a> - Internal region: C-HYNKQLQADPKQ
<b>Isotype:</b>	IgG
<b>Form:</b>	Liquid
<b>Purification:</b>	Purified from goat serum by ammonium sulphate precipitation followed by antigen affinity chromatography using the immunizing peptide.
<b>Storage:</b>	Aliquot and store at -20°C. Avoid repeated freeze/thaw cycles.
<b>Gene Symbol:</b>	PICK1
<b>GeneID:</b>	<a href="#">9463</a> <a href="#">18693</a> <a href="#">84591</a>
<b>NCBI Accession:</b>	NP_036539.1
<b>Buffer:</b>	Tris saline, pH 7.3, containing 0.02% sodium azide and 0.5% bovine serum albumin.
<b>Concentration:</b>	0.5 mg/ml
<b>Note:</b>	THIS PRODUCT IS FOR RESEARCH USE ONLY. NOT FOR USE IN DIAGNOSTIC, THERAPEUTIC OR COSMETIC PROCEDURES. NOT FOR HUMAN OR ANIMAL CONSUMPTION.

For Reference Only