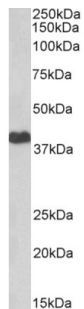


## Protein Kinase, cAMP Dependent Catalytic Alpha (PRKACA) Antibody

Catalogue No.: abx433177



abx433177 (2 µg/ml) staining of HeLa lysate (35 µg protein in RIPA buffer). Primary incubation was 1 hour. Detected by chemiluminescence.

PRKACA Antibody is a Goat Polyclonal antibody against PRKACA.

<b>Target:</b>	Protein Kinase, cAMP Dependent Catalytic Alpha (PRKACA)
<b>Clonality:</b>	Polyclonal
<b>Reactivity:</b>	Human
<b>Tested Applications:</b>	P-ELISA, WB
<b>Host:</b>	Goat
<b>Recommended dilutions:</b>	P-ELISA: 1/64000. Optimal dilutions/concentrations should be determined by the end user.
<b>Conjugation:</b>	Unconjugated
<b>Immunogen:</b>	<a href="#">abx617339</a> - Internal region: C-KHKETGNHYAMK
<b>Isotype:</b>	IgG
<b>Form:</b>	Liquid
<b>Purification:</b>	Purified from goat serum by ammonium sulphate precipitation followed by antigen affinity chromatography using the immunizing peptide.
<b>Storage:</b>	Aliquot and store at -20°C. Avoid repeated freeze/thaw cycles.
<b>Gene Symbol:</b>	PRKACA
<b>GeneID:</b>	<a href="#">5566</a>
<b>NCBI Accession:</b>	NP_002721.1, NP_997401.1, NP_001291278.1

# Datasheet

Version: 3.0.0  
Revision date: 27 Dec 2024



**Buffer:** Tris saline, pH 7.3, containing 0.02% sodium azide and 0.5% bovine serum albumin.

**Concentration:** 0.5 mg/ml

**Note:** This product is for research use only.

For Reference Only