

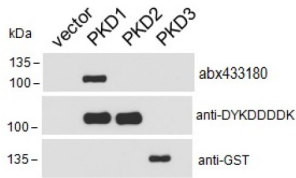
Datasheet

Version: 3.0.0
Revision date: 15 Nov 2024

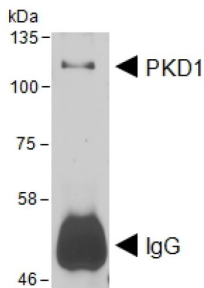


Protein Kinase D1 (PRKD1) Antibody

Catalogue No.: abx433180



HEK293 lysate overexpressing Human DYKDDDDK-tagged PKD1, Human DYKDDDDK-tagged PKD2 or Human GST-tagged PKD3 probed with abx433180 (0.1 µg/ml) in top panel, probed with anti-DYKDDDDK in middle panel and probed with anti-GST in bottom panel.



HEK293 lysate overexpressing Human DYKDDDDK-tagged PKD1 was used to immunoprecipitate PKD1 with 2 µg abx433180. The precipitate was subsequently probed in Western blot using abx433180 at 1 µg/ml. The secondary anti-goat picks up the heavy chain of abx433180 used for the immunoprecipitation (annotated as IgG).

PRKD1 Antibody is a Goat Polyclonal antibody against PRKD1.

Target:	Protein Kinase D1 (PRKD1)
Clonality:	Polyclonal
Reactivity:	Human
Tested Applications:	P-ELISA, WB, IP
Host:	Goat
Recommended dilutions:	P-ELISA: 1/8000. Optimal dilutions/concentrations should be determined by the end user.
Conjugation:	Unconjugated
Immunogen:	abx617343 - Internal region, 383-395 AA: C-QDPDPDHEDANRT
Isotype:	IgG
Form:	Liquid
Purification:	Purified from goat serum by ammonium sulphate precipitation followed by antigen affinity chromatography using the immunizing peptide.

Datasheet

Version: 3.0.0
Revision date: 15 Nov 2024



Storage: Aliquot and store at -20°C. Avoid repeated freeze/thaw cycles.

Gene Symbol: PRKD1

GeneID: [5587](#)

NCBI Accession: NP_002733.2

Buffer: Tris saline, pH 7.3, containing 0.02% sodium azide and 0.5% bovine serum albumin.

Concentration: 0.5 mg/ml

Note: This product is for research use only.

For Reference Only