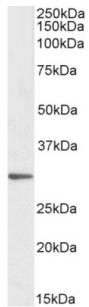


Datasheet

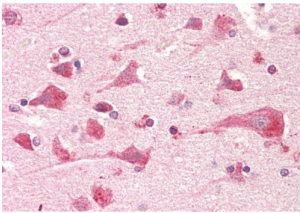
Version: 2.0.0
Revision date: 23 Dec 2024

Prostaglandin E Synthase 2 (PTGES2) Antibody

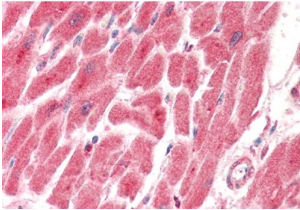
Catalogue No.: abx433200



abx433200 (1 µg/ml) staining of HeLa lysate (35 µg protein in RIPA buffer). Primary incubation was 1 hour. Detected by chemiluminescence.



abx433200 (5 µg/ml) staining of paraffin embedded Human Cortex. Steamed antigen retrieval with citrate buffer pH 6, AP-staining.



abx433200 (5 µg/ml) staining of paraffin embedded Human Heart. Steamed antigen retrieval with citrate buffer pH 6, AP-staining.

PTGES2 Antibody is a Goat Polyclonal antibody against PTGES2.

Target: Prostaglandin E Synthase 2 (PTGES2)

Clonality: Polyclonal

Reactivity: Human

Tested Applications: P-ELISA, WB, IHC

Host: Goat

Recommended dilutions: P-ELISA: 1/128000. Optimal dilutions/concentrations should be determined by the end user.

Conjugation: Unconjugated

Datasheet

Version: 2.0.0
Revision date: 23 Dec 2024



Immunogen:	abx617350 - Internal region, 292-306 AA: C-RLKSRHRLQDNVRED
Isotype:	IgG
Form:	Liquid
Purification:	Purified from goat serum by ammonium sulphate precipitation followed by antigen affinity chromatography using the immunizing peptide.
Storage:	Aliquot and store at -20°C. Avoid repeated freeze/thaw cycles.
Gene Symbol:	PTGES2
GeneID:	80142
NCBI Accession:	NP_079348.1, NP_945176.1
Buffer:	Tris saline, pH 7.3, containing 0.02% sodium azide and 0.5% bovine serum albumin.
Concentration:	0.5 mg/ml
Note:	This product is for research use only.

For Reference Only