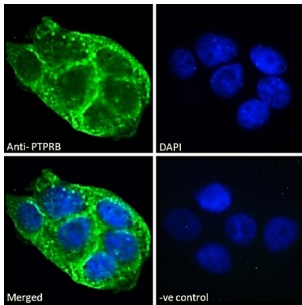
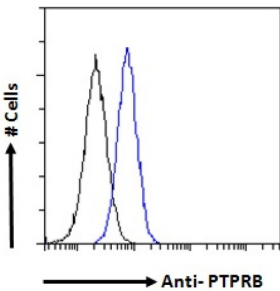


## Protein Tyrosine Phosphatase Receptor Type B (PTPRB) Antibody

Catalogue No.: abx431909



Immunofluorescence analysis of paraformaldehyde fixed A431 cells, permeabilized with 0.15% Triton. Primary incubation 1hr (10 µg/ml) followed by Alexa Fluor 488 secondary antibody (2 µg/ml), showing membrane and vesicle staining. The nuclear stain is DAPI (blue). Negative control: Unimmunized goat IgG (10 µg/ml) followed by Alexa Fluor 488 secondary antibody (2 µg/ml).



Flow cytometric analysis of paraformaldehyde fixed A431 cells (blue line), permeabilized with 0.5% Triton. Primary incubation 1hr (10 µg/ml) followed by Alexa Fluor 488 secondary antibody (1 µg/ml). IgG control: Unimmunized goat IgG (black line) followed by Alexa Fluor 488 secondary antibody.

PTPRB Antibody is a Goat Polyclonal antibody against PTPRB.

**Target:** Protein Tyrosine Phosphatase Receptor Type B (PTPRB)

**Clonality:** Polyclonal

**Reactivity:** Human

**Tested Applications:** P-ELISA, IF/ICC, FCM

**Host:** Goat

**Recommended dilutions:** P-ELISA: 1/16000. Optimal dilutions/concentrations should be determined by the end user.

**Conjugation:** Unconjugated

**Immunogen:** [abx616298](#) - Internal region: C-ENHSFSQERTVDPK

**Isotype:** IgG

**Form:** Liquid

**Purification:** Purified from goat serum by ammonium sulphate precipitation followed by antigen affinity chromatography using the immunizing peptide.

# Datasheet

Version: 2.0.0  
Revision date: 13 Mar 2025



**Storage:** Aliquot and store at -20°C. Avoid repeated freeze/thaw cycles.

**Gene Symbol:** PTPRB

**GeneID:** [5787 314843](#)

**NCBI Accession:** NP\_001103224.1, NP\_002828.3, NP\_001193901.1

**Buffer:** Tris saline, pH 7.3, containing 0.02% sodium azide and 0.5% bovine serum albumin.

**Concentration:** 0.5 mg/ml

**Note:** THIS PRODUCT IS FOR RESEARCH USE ONLY. NOT FOR USE IN DIAGNOSTIC, THERAPEUTIC OR COSMETIC PROCEDURES. NOT FOR HUMAN OR ANIMAL CONSUMPTION.

For Reference Only