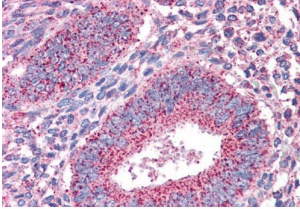
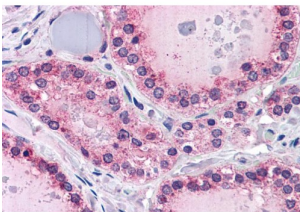


## Protein Tyrosine Phosphatase Receptor Type M (PTPRM) Antibody

Catalogue No.: abx433204



abx433204 (3.75 µg/ml) staining of paraffin embedded Human Uterus. Steamed antigen retrieval with citrate buffer pH 6, AP-staining.



abx433204 (3.75 µg/ml) staining of paraffin embedded Human Thyroid. Steamed antigen retrieval with citrate buffer pH 6, AP-staining.

PTPRM Antibody is a Goat Polyclonal antibody against PTPRM.

**Target:** Protein Tyrosine Phosphatase Receptor Type M (PTPRM)

**Clonality:** Polyclonal

**Reactivity:** Human

**Tested Applications:** P-ELISA, IHC

**Host:** Goat

**Recommended dilutions:** P-ELISA: 1/16000. Optimal dilutions/concentrations should be determined by the end user.

**Conjugation:** Unconjugated

**Immunogen:** [abx615367](#) - Internal region: C-KLIRQVDKWQEEYN

**Isotype:** IgG

**Form:** Liquid

**Purification:** Purified from goat serum by ammonium sulphate precipitation followed by antigen affinity chromatography using the immunizing peptide.

# Datasheet

Version: 5.0.0  
Revision date: 05 Mar 2025



**Storage:** Aliquot and store at -20°C. Avoid repeated freeze/thaw cycles.

**Gene Symbol:** PTPRM

**GeneID:** [5797](#)

**NCBI Accession:** NP\_001098714.1, NP\_002836.3

**Buffer:** Tris saline, pH 7.3, containing 0.02% sodium azide and 0.5% bovine serum albumin.

**Concentration:** 0.5 mg/ml

**Note:** THIS PRODUCT IS FOR RESEARCH USE ONLY. NOT FOR USE IN DIAGNOSTIC, THERAPEUTIC OR COSMETIC PROCEDURES. NOT FOR HUMAN OR ANIMAL CONSUMPTION.

For Reference Only