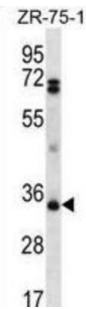
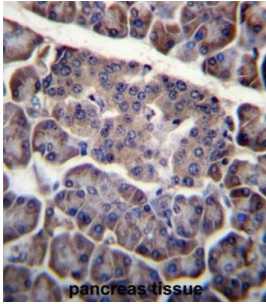


Programmed Cell Death Protein 1 Ligand 2 (PDCD1LG2) Antibody

Catalogue No.: abx026718



PDCD1LG2 is involved in the costimulatory signal, essential for T-cell proliferation and IFNG production in a PDCD1-independent manner. Interaction with PDCD1 inhibits T-cell proliferation by blocking cell cycle progression and cytokine production (By similarity).

Target:	Programmed Cell Death Protein 1 Ligand 2 (PDCD1LG2)
Clonality:	Polyclonal
Reactivity:	Human
Tested Applications:	ELISA, WB, IHC
Host:	Rabbit
Recommended dilutions:	WB: 1/1000, IHC-P: 1/10 - 1/50. Not tested in IHC-F. Optimal dilutions/concentrations should be determined by the end user.
Conjugation:	Unconjugated
Immunogen:	KLH-conjugated synthetic peptide between 46-75 amino acids from the N-terminal region of human PDCD1LG2.
Isotype:	IgG
Form:	Liquid

Datasheet

Version: 1.0.0
Revision date: 11 Jan 2025



Purification: Purified through a protein A column, followed by peptide affinity purification.

Storage: Aliquot and store at -20°C. Avoid repeated freeze/thaw cycles.

UniProt Primary AC: Q9BQ51 ([UniProt](#), [ExPASy](#))

Gene Symbol: PDCD1LG2

String: [9606.ENSP00000380855](#)

Molecular Weight: Calculated MW: 31 kDa

Buffer: PBS containing 0.09% sodium azide.

Note: This product is for research use only.

For Reference Only