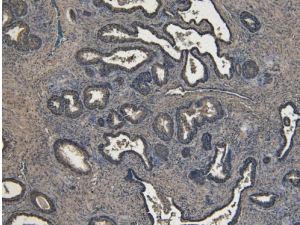
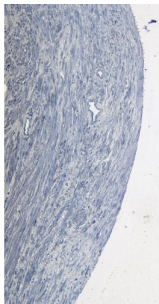


## Receptor Tyrosine Kinase Like Orphan Receptor 1 (ROR1) Antibody

Catalogue No.: abx431844



Immunohistochemistry analysis of paraffin-embedded Human Prostate using Receptor Tyrosine Kinase Like Orphan Receptor 1 (ROR1) Antibody (6 µg/ml). Heat induced antigen retrieval with citrate buffer pH 6, HRP-staining.



Immunohistochemistry analysis of paraffin-embedded Human Prostate (negative control), with no primary antibody.

ROR1 Antibody is a Goat Polyclonal antibody against ROR1.

**Target:** Receptor Tyrosine Kinase Like Orphan Receptor 1 (ROR1)

**Clonality:** Polyclonal

**Reactivity:** Human

**Tested Applications:** P-ELISA, IHC

**Host:** Goat

**Recommended dilutions:** P-ELISA: 1/16000. Optimal dilutions/concentrations should be determined by the end user.

**Conjugation:** Unconjugated

**Immunogen:** [abx615810](#) - C-Terminus (near): C-GNKSQKPYKIDSKQA

**Isotype:** IgG

**Form:** Liquid

**Purification:** Purified from goat serum by ammonium sulphate precipitation followed by antigen affinity chromatography using the immunizing peptide.

# Datasheet

Version: 2.0.0

Revision date: 06 Mar 2025



<b>Storage:</b>	Aliquot and store at -20°C. Avoid repeated freeze/thaw cycles.
<b>Gene Symbol:</b>	ROR1
<b>GeneID:</b>	<a href="#">4919</a> <a href="#">26563</a> <a href="#">362550</a>
<b>NCBI Accession:</b>	NP_005003.2
<b>Buffer:</b>	Tris saline, pH 7.3, containing 0.02% sodium azide and 0.5% bovine serum albumin.
<b>Concentration:</b>	0.5 mg/ml
<b>Note:</b>	THIS PRODUCT IS FOR RESEARCH USE ONLY. NOT FOR USE IN DIAGNOSTIC, THERAPEUTIC OR COSMETIC PROCEDURES. NOT FOR HUMAN OR ANIMAL CONSUMPTION.

For Reference Only