

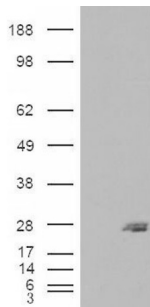
# Datasheet

Version: 4.0.0  
Revision date: 05 Mar 2025



## GTP-Binding Protein SAR1b (SAR1B) Antibody

Catalogue No.: abx430444



HEK293 overexpressing SAR1B and probed with abx430444 (mock transfection in first lane).



abx430444 (0.03 µg/ml) staining of Mouse Liver lysate (35 µg protein in RIPA buffer). Primary incubation was 1 hour. Detected by chemiluminescence.

SAR1B Antibody is a Goat Polyclonal antibody against SAR1B.

**Target:** GTP-Binding Protein SAR1b (SAR1B)

**Clonality:** Polyclonal

**Reactivity:** Mouse, Rat

**Tested Applications:** P-ELISA, WB

**Host:** Goat

**Recommended dilutions:** P-ELISA: 1/8000. Optimal dilutions/concentrations should be determined by the end user.

**Conjugation:** Unconjugated

**Immunogen:** [abx615199](#) - Internal region: C-DHERLLESKEELD

**Isotype:** IgG

**Form:** Liquid

**Purification:** Purified from goat serum by ammonium sulphate precipitation followed by antigen affinity chromatography using the immunizing peptide.

# Datasheet

Version: 4.0.0  
Revision date: 05 Mar 2025



**Storage:** Aliquot and store at -20°C. Avoid repeated freeze/thaw cycles.

**UniProt Primary AC:** Q9Y6B6 ([UniProt](#), [ExPASy](#))

**Gene Symbol:** SAR1B

**GeneID:** [51128 66397 287276](#)

**OMIM:** [246700](#)

**NCBI Accession:** NP\_001028675.1, NP\_057187.1

**HGNC:** 10535

**KEGG:** hsa:51128

**Ensembl:** ENSG00000152700

**String:** [9606.ENSP00000385432](#)

**Buffer:** Tris saline, pH 7.3, containing 0.02% sodium azide and 0.5% bovine serum albumin.

**Concentration:** 0.5 mg/ml

**Note:** THIS PRODUCT IS FOR RESEARCH USE ONLY. NOT FOR USE IN DIAGNOSTIC, THERAPEUTIC OR COSMETIC PROCEDURES. NOT FOR HUMAN OR ANIMAL CONSUMPTION.

For Reference Only