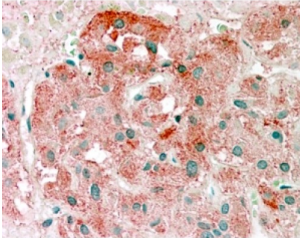
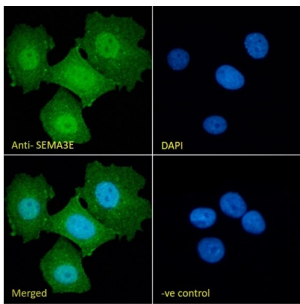


## Semaphorin 3E (SEMA3E) Antibody

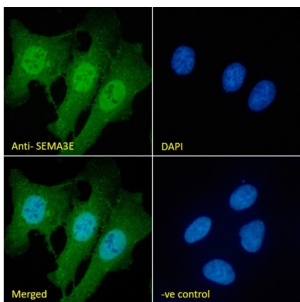
Catalogue No.: abx433260



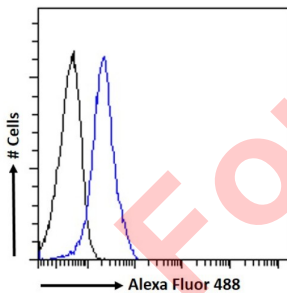
Immunohistochemistry analysis of paraffin-embedded Human Adrenal Gland using Semaphorin 3E (SEMA3E) Antibody (2.5 µg/ml). Steamed antigen retrieval with citrate buffer pH 6, AP-staining.



Immunofluorescence analysis of paraformaldehyde fixed U2OS cells permeabilized with 0.15% Triton, using Semaphorin 3E (SEMA3E) Antibody (1 hour, 10 µg/ml) followed by AF488 secondary antibody (2 µg/ml), and DAPI (blue) nuclear stain. Negative control: Unimmunized goat IgG (10 µg/ml) followed by AF488 secondary antibody (2 µg/ml)..



Immunofluorescence analysis of paraformaldehyde fixed MCF7 cells permeabilized with 0.15% Triton, using Semaphorin 3E (SEMA3E) Antibody (1 hour, 10 µg/ml) followed by AF488 secondary antibody (2 µg/ml), and DAPI (blue) nuclear stain. Negative control: Unimmunized goat IgG (10 µg/ml) followed by AF488 secondary antibody (2 µg/ml).



Flow cytometric analysis of paraformaldehyde fixed MCF7 cells (blue line) permeabilized with 0.5% Triton, using Semaphorin 3E (SEMA3E) Antibody (1 hour, 10 µg/ml) followed by AF488 secondary antibody (1 µg/ml). IgG control: Unimmunized goat IgG (black line) followed by AF488 secondary antibody.

SEMA3E Antibody is a Goat Polyclonal antibody against SEMA3E.

**Target:** Semaphorin 3E (SEMA3E)

**Clonality:** Polyclonal

**Reactivity:** Human

# Datasheet

Version: 3.0.0  
Revision date: 20 Jan 2025



**Tested Applications:** P-ELISA, IHC, IF/ICC, FCM

**Host:** Goat

**Recommended dilutions:** P-ELISA: 1/64000. Optimal dilutions/concentrations should be determined by the end user.

**Conjugation:** Unconjugated

**Immunogen:** [abx269636](#) - C-Terminus: C-KPEHYRLPRHTLDS

**Isotype:** IgG

**Form:** Liquid

**Purification:** Purified from goat serum by ammonium sulphate precipitation followed by antigen affinity chromatography using the immunizing peptide.

**Storage:** Aliquot and store at -20°C. Avoid repeated freeze/thaw cycles.

**Gene Symbol:** SEMA3E

**GeneID:** [9723](#)

**NCBI Accession:** NP\_036563.1

**Buffer:** Tris saline, pH 7.3, containing 0.02% sodium azide and 0.5% bovine serum albumin.

**Concentration:** 0.5 mg/ml

**Note:** This product is for research use only.

For Reference Only