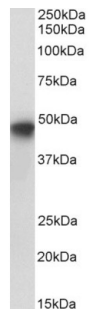


SERPINE1 Antibody (Biotin)

Catalogue No.: abx430278



Western blot analysis of HepG2 lysate (35 µg protein in RIPA buffer) using biotin-conjugated SERPINE1 Antibody (0.2 µg/ml, 1 hour). Detected by chemiluminescence, using streptavidin-HRP and using NAP blocker as a substitute for skimmed milk.

SERPINE1 Antibody is a Goat Polyclonal antibody against SERPINE1 ([abx430277](#)) conjugated to biotin.

Target: SERPINE1

Clonality: Polyclonal

Reactivity: Human

Tested Applications: P-ELISA, WB

Host: Goat

Recommended dilutions: P-ELISA: 1/64000. Optimal dilutions/concentrations should be determined by the end user.

Conjugation: Biotin

Immunogen: Internal region: C-GFKIDDKGMAPALRH

Isotype: IgG

Form: Liquid

Purification: Purified from goat serum by ammonium sulphate precipitation followed by antigen affinity chromatography using the immunizing peptide.

Storage: Aliquot and store at -20°C. Avoid repeated freeze/thaw cycles.

Gene Symbol: SERPINE1

GeneID: [5054](#)

NCBI Accession: NP_000593.1

Datasheet

Version: 2.0.0

Revision date: 22 Dec 2024



Buffer: Tris saline, pH 7.3, containing 0.02% sodium azide and 0.5% bovine serum albumin.

Concentration: 0.5 mg/ml

Note: This product is for research use only.

For Reference Only