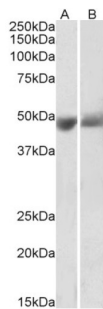


Pigment Epithelium-Derived Factor / PEDF (SERPINF1) Antibody

Catalogue No.: abx430860



abx430860 (0.3 µg/ml) staining of Human Albumin-depleted Plasma (A) and Serum (B) lysates (35 µg protein in RIPA buffer). Primary incubation was 1 hour. Detected by chemiluminescence.

Pigment Epithelium-Derived Factor / PEDF (SERPINF1) Antibody is a Goat Polyclonal antibody against SERPINF1.

Target:	Pigment Epithelium-Derived Factor / PEDF (SERPINF1)
Clonality:	Polyclonal
Reactivity:	Human
Tested Applications:	P-ELISA, WB
Host:	Goat
Recommended dilutions:	P-ELISA: 1/128000. Optimal dilutions/concentrations should be determined by the end user.
Conjugation:	Unconjugated
Immunogen:	abx617107 - Internal region: C-KITGKPIKLTQVEHR
Isotype:	IgG
Form:	Liquid
Purification:	Purified from goat serum by ammonium sulphate precipitation followed by antigen affinity chromatography using the immunizing peptide.
Storage:	Aliquot and store at -20°C. Avoid repeated freeze/thaw cycles.
UniProt Primary AC:	P36955 (UniProt , ExPASy)
Gene Symbol:	SERPINF1
GeneID:	5176

Datasheet

Version: 2.0.0
Revision date: 22 Nov 2024



OMIM: [172860](#)

NCBI Accession: NP_002606.3

HGNC: 8824

KEGG: hsa:5176

Ensembl: ENSG00000132386

String: [9606.ENSP00000254722](#)

Buffer: Tris saline, pH 7.3, containing 0.02% sodium azide and 0.5% bovine serum albumin.

Concentration: 0.5 mg/ml

Note: This product is for research use only.

For Reference Only