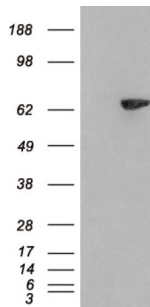
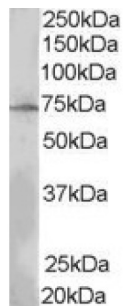


SH2B Adapter Protein 3 (SH2B3) Antibody

Catalogue No.: abx430033



HEK293 overexpressing SH2B3 and probed with abx430033 (mock transfection in first lane).



abx430033 (0.3 µg/ml) staining of MOLT4 lysate (35 µg protein in RIPA buffer). Primary incubation was 1 hour. Detected by chemiluminescence.

SH2B3 Antibody is a Goat Polyclonal antibody against SH2B3.

Target: SH2B Adapter Protein 3 (SH2B3)**Clonality:** Polyclonal**Reactivity:** Human**Tested Applications:** P-ELISA, WB**Host:** Goat**Recommended dilutions:** P-ELISA: 1/64000. Optimal dilutions/concentrations should be determined by the end user.**Conjugation:** Unconjugated**Immunogen:** [abx269558](#) - N-Terminus: NGPALQPSSPC**Isotype:** IgG**Form:** Liquid**Purification:** Purified from goat serum by ammonium sulphate precipitation followed by antigen affinity chromatography using the immunizing peptide.

Datasheet

Version: 2.0.0

Revision date: 28 Jan 2025



Storage:	Aliquot and store at -20°C. Avoid repeated freeze/thaw cycles.
Gene Symbol:	SH2B3
GeneID:	10019
NCBI Accession:	NP_005466.1
Buffer:	Tris saline, pH 7.3, containing 0.02% sodium azide and 0.5% bovine serum albumin.
Concentration:	0.5 mg/ml
Note:	This product is for research use only.

For Reference Only