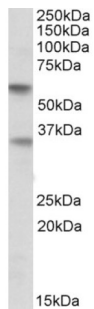


Sialic Acid Binding Ig Like Lectin 6 (SIGLEC6) Antibody

Catalogue No.: abx433272



abx433272 (0.5 µg/ml) staining of Human Placenta lysate (35 µg protein in RIPA buffer). Primary incubation was 1 hour. Detected by chemiluminescence.

SIGLEC6 Antibody is a Goat Polyclonal antibody against SIGLEC6.

Target:	Sialic Acid Binding Ig Like Lectin 6 (SIGLEC6)
Clonality:	Polyclonal
Reactivity:	Human
Tested Applications:	P-ELISA, WB
Host:	Goat
Recommended dilutions:	P-ELISA: 1/16000. Optimal dilutions/concentrations should be determined by the end user.
Conjugation:	Unconjugated
Immunogen:	abx616330 - Internal region: C-KWMKYGYTSSK
Isotype:	IgG
Form:	Liquid
Purification:	Purified from goat serum by ammonium sulphate precipitation followed by antigen affinity chromatography using the immunizing peptide.
Storage:	Aliquot and store at -20°C. Avoid repeated freeze/thaw cycles.
Gene Symbol:	SIGLEC6
GeneID:	946
NCBI Accession:	NP_001236.4, NP_942142.3, NP_942143.3

Datasheet

Version: 2.0.0

Revision date: 05 Mar 2025



Buffer: Tris saline, pH 7.3, containing 0.02% sodium azide and 0.5% bovine serum albumin.

Concentration: 0.5 mg/ml

Note: THIS PRODUCT IS FOR RESEARCH USE ONLY. NOT FOR USE IN DIAGNOSTIC, THERAPEUTIC OR COSMETIC PROCEDURES. NOT FOR HUMAN OR ANIMAL CONSUMPTION.

For Reference Only