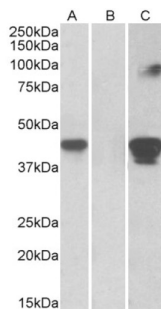


# Datasheet

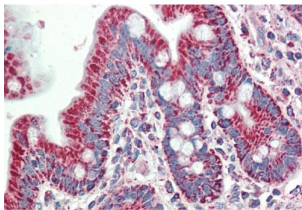
Version: 3.0.0  
Revision date: 05 Mar 2025

## SLAM Family Member 8 (SLAMF8) Antibody

Catalogue No.: abx432189



HEK293 lysate (10 µg protein in RIPA buffer) overexpressing Human SLAMF8 with C-terminal MYC tag probed with abx432189 (1 µg/ml) in Lane A and probed with anti-MYC Tag (1/1000) in lane C. Mock-transfected HEK293 probed with abx432189 (1 µg/ml) in Lane B. Primary incubations were for 1 hour. Detected by chemiluminescence.



abx432189 (5 µg/ml staining of paraffin embedded Human Small Intestine. Steamed antigen retrieval with citrate buffer pH 6, AP-staining.

SLAMF8 Antibody is a Goat Polyclonal antibody against SLAMF8.

<b>Target:</b>	SLAM Family Member 8 (SLAMF8)
<b>Clonality:</b>	Polyclonal
<b>Reactivity:</b>	Human
<b>Tested Applications:</b>	P-ELISA, WB, IHC
<b>Host:</b>	Goat
<b>Recommended dilutions:</b>	P-ELISA: 1/8000. Optimal dilutions/concentrations should be determined by the end user.
<b>Conjugation:</b>	Unconjugated
<b>Immunogen:</b>	<a href="#">abx616424</a> - Internal region: C-TLYHSRFLGRAQ
<b>Isotype:</b>	IgG
<b>Form:</b>	Liquid
<b>Purification:</b>	Purified from goat serum by ammonium sulphate precipitation followed by antigen affinity chromatography using the immunizing peptide.

# Datasheet

Version: 3.0.0

Revision date: 05 Mar 2025



**Storage:** Aliquot and store at -20°C. Avoid repeated freeze/thaw cycles.

**Gene Symbol:** SLAMF8

**GeneID:** [56833](#) [74748](#) [289237](#)

**NCBI Accession:** NP\_064510.1

**Buffer:** Tris saline, pH 7.3, containing 0.02% sodium azide and 0.5% bovine serum albumin.

**Concentration:** 0.5 mg/ml

**Note:** THIS PRODUCT IS FOR RESEARCH USE ONLY. NOT FOR USE IN DIAGNOSTIC, THERAPEUTIC OR COSMETIC PROCEDURES. NOT FOR HUMAN OR ANIMAL CONSUMPTION.

For Reference Only