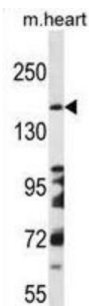
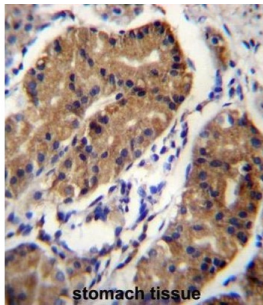


Datasheet

Version: 3.0.0
Revision date: 13 Mar 2025

Netrin Receptor DCC (DCC) Antibody

Catalogue No.: abx026737



This gene encodes a netrin 1 receptor. The transmembrane protein is a member of the immunoglobulin superfamily of cell adhesion molecules, and mediates axon guidance of neuronal growth cones towards sources of netrin 1 ligand. The cytoplasmic tail interacts with the tyrosine kinases Src and focal adhesion kinase (FAK, also known as PTK2) to mediate axon attraction. The protein partially localizes to lipid rafts, and induces apoptosis in the absence of ligand. The protein functions as a tumor suppressor, and is frequently mutated or downregulated in colorectal cancer and esophageal carcinoma.

Target: Netrin Receptor DCC (DCC)

Clonality: Polyclonal

Reactivity: Mouse

Tested Applications: ELISA, WB, IHC

Host: Rabbit

Recommended dilutions: WB: 1/1000, IHC-P: 1/10 - 1/50. Not tested in IHC-F. Optimal dilutions/concentrations should be determined by the end user.

Conjugation: Unconjugated

Immunogen: KLH-conjugated synthetic peptide between 643-670 amino acids from the Central region of human DCC.

Isotype: IgG

Datasheet

Version: 3.0.0
Revision date: 13 Mar 2025



Form:	Liquid
Purification:	Purified through a protein A column, followed by peptide affinity purification.
Storage:	Aliquot and store at -20°C. Avoid repeated freeze/thaw cycles.
UniProt Primary AC:	P43146 (UniProt , ExpASY)
Gene Symbol:	DCC
KEGG:	hsa:1630
String:	9606.ENSP00000389140
Molecular Weight:	Calculated MW: 158 kDa
Buffer:	PBS containing 0.09% sodium azide.
Specificity:	Predicted to react with Rat DCC.
Note:	THIS PRODUCT IS FOR RESEARCH USE ONLY. NOT FOR USE IN DIAGNOSTIC, THERAPEUTIC OR COSMETIC PROCEDURES. NOT FOR HUMAN OR ANIMAL CONSUMPTION.

For Reference Only