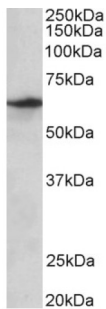


Datasheet

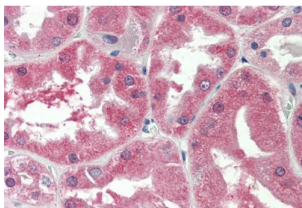
Version: 4.0.0
Revision date: 18 Mar 2025

SLC47A2 Antibody

Catalogue No.: abx433285



abx433285 (0.3 µg/ml) staining of Human Testis lysate (35 µg protein in RIPA buffer).
Detected by chemiluminescence.



abx433285 (5 µg/ml) staining of paraffin embedded Human Kidney. Steamed antigen retrieval with citrate buffer pH 6, AP-staining.

SLC47A2 Antibody is a Goat Polyclonal antibody against SLC47A2.

Target: SLC47A2

Clonality: Polyclonal

Reactivity: Human

Tested Applications: P-ELISA, WB, IHC

Host: Goat

Recommended dilutions: P-ELISA: 1/32000. Optimal dilutions/concentrations should be determined by the end user.

Conjugation: Unconjugated

Immunogen: [abx616489](#) - Internal region (near C-Terminus): SECHVDFFRTPEEAH

Isotype: IgG

Form: Liquid

Purification: Purified from goat serum by ammonium sulphate precipitation followed by antigen affinity chromatography using the immunizing peptide.

Datasheet

Version: 4.0.0
Revision date: 18 Mar 2025



Storage: Aliquot and store at -20°C. Avoid repeated freeze/thaw cycles.

Gene Symbol: SLC47A2

GeneID: [146802](#)

NCBI Accession: NP_690872.2, NP_001093116.1

Buffer: Tris saline, pH 7.3, containing 0.02% sodium azide and 0.5% bovine serum albumin.

Concentration: 0.5 mg/ml

Note: THIS PRODUCT IS FOR RESEARCH USE ONLY. NOT FOR USE IN DIAGNOSTIC, THERAPEUTIC OR COSMETIC PROCEDURES. NOT FOR HUMAN OR ANIMAL CONSUMPTION.

For Reference Only