

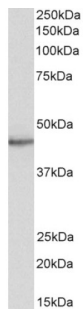
Datasheet

Version: 3.0.0
Revision date: 06 Sep 2024

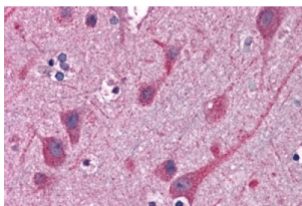


Signal-Transducing Adaptor Protein 2 (STAP2) Antibody

Catalogue No.: abx430607



abx430607 (0.5 µg/ml) staining of Human Heart lysate (35 µg protein in RIPA buffer). Primary incubation was 1 hour. Detected by chemiluminescence.



abx430607 (3.8 µg/ml) staining of paraffin embedded Human Cortex. Steamed antigen retrieval with citrate buffer pH 6, AP-staining.

STAP2 Antibody is a Goat Polyclonal antibody against STAP2.

Target: Signal-Transducing Adaptor Protein 2 (STAP2)

Clonality: Polyclonal

Reactivity: Human

Tested Applications: P-ELISA, WB

Host: Goat

Recommended dilutions: P-ELISA: 1/128000. Optimal dilutions/concentrations should be determined by the end user.

Conjugation: Unconjugated

Immunogen: [abx269042](#) - C-Terminus: C-ELQKKLEKRRALEH

Isotype: IgG

Form: Liquid

Purification: Purified from goat serum by ammonium sulphate precipitation followed by antigen affinity chromatography using the immunizing peptide.

Datasheet

Version: 3.0.0

Revision date: 06 Sep 2024



Storage: Aliquot and store at -20°C. Avoid repeated freeze/thaw cycles.

Gene Symbol: STAP2

GeneID: [55620](#)

NCBI Accession: NP_060190.2, NP_001013863.1

Buffer: Tris saline, pH 7.3, containing 0.02% sodium azide and 0.5% bovine serum albumin.

Concentration: 0.5 mg/ml

Note: This product is for research use only.

For Reference Only