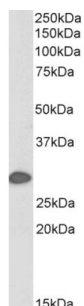


## 14-3-3 Protein Sigma (SFN) Antibody (Biotin)

Catalogue No.: abx430936



Western blot analysis of Mouse Skin lysate (35 µg protein in RIPA buffer) using biotin-conjugated 14-3-3 Protein Sigma (SFN) Antibody (0.1 µg/ml, 1 hour). Detected by chemiluminescence, using streptavidin-HRP and using NAP blocker as a substitute for skimmed milk.

14-3-3 Protein Sigma (SFN) Antibody (Biotin) is a Goat Polyclonal antibody against 14-3-3 Protein Sigma ([abx430935](#)) conjugated to biotin.

**Target:** 14-3-3 Protein Sigma (SFN)

**Clonality:** Polyclonal

**Reactivity:** Human, Mouse

**Tested Applications:** P-ELISA, WB

**Host:** Goat

**Recommended dilutions:** P-ELISA: 1/16000. Optimal dilutions/concentrations should be determined by the end user.

**Conjugation:** Biotin

**Immunogen:** Internal region: CDLHTLSEDSYKDST

**Isotype:** IgG

**Form:** Liquid

**Purification:** Purified from goat serum by ammonium sulphate precipitation followed by antigen affinity chromatography using the immunizing peptide.

**Storage:** Aliquot and store at -20°C. Avoid repeated freeze/thaw cycles.

**Gene Symbol:** SFN

**GeneID:** [2810](#) [55948](#) [313017](#)

# Datasheet

Version: 3.0.0  
Revision date: 31 Jan 2025



**NCBI Accession:** NP\_006133.1

**Buffer:** Tris saline, pH 7.3, containing 0.02% sodium azide and 0.5% bovine serum albumin.

**Concentration:** 0.5 mg/ml

**Note:** This product is for research use only.

For Reference Only