

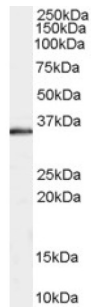
Datasheet

Version: 2.0.0
Revision date: 22 Dec 2024

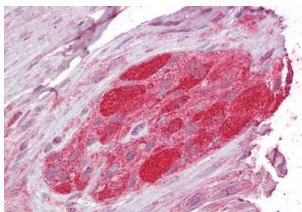


STIP1 Homology And U-Box Containing Protein 1 (STUB1) Antibody

Catalogue No.: abx430610



abx430610 staining (0.3 µg/ml) of Human Muscle lysate (RIPA buffer, 35 µg total protein per lane). Primary incubated for 1 hour. Detected by chemiluminescence.



abx430610 (2.5 µg/ml staining of paraffin embedded Human Small Intestine. Steamed antigen retrieval with citrate buffer pH 6, AP-staining.

STUB1 Antibody is a Goat Polyclonal antibody against STUB1.

Target: STIP1 Homology And U-Box Containing Protein 1 (STUB1)

Clonality: Polyclonal

Reactivity: Human

Tested Applications: P-ELISA, WB

Host: Goat

Recommended dilutions: P-ELISA: 1/64000. Optimal dilutions/concentrations should be determined by the end user.

Conjugation: Unconjugated

Immunogen: [abx269119](#) - C-Terminus: C-DAFISENGWVEDY

Isotype: IgG

Form: Liquid

Purification: Purified from goat serum by ammonium sulphate precipitation followed by antigen affinity chromatography using the immunizing peptide.

Datasheet

Version: 2.0.0

Revision date: 22 Dec 2024



Storage: Aliquot and store at -20°C. Avoid repeated freeze/thaw cycles.

Gene Symbol: STUB1

GeneID: [10273](#)

NCBI Accession: NP_005852.2

Buffer: Tris saline, pH 7.3, containing 0.02% sodium azide and 0.5% bovine serum albumin.

Concentration: 0.5 mg/ml

Note: This product is for research use only.

For Reference Only