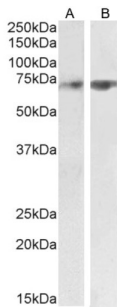
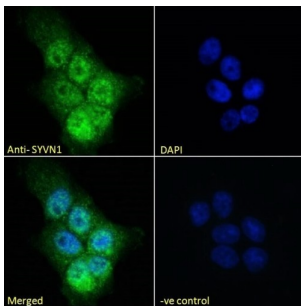


E3 Ubiquitin-Protein Ligase Synoviolin (SYVN1) Antibody

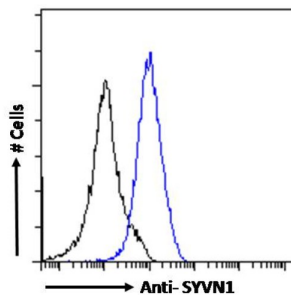
Catalogue No.: abx431931



abx431931 (2 µg/ml) staining of Human Cerebellum lysate (35 µg protein in RIPA buffer). Primary incubation was 1 hour. Detected by chemiluminescence.



Immunofluorescence analysis of paraformaldehyde fixed A431 cells, permeabilized with 0.15% Triton. Primary incubation 1hr (10 µg/ml) followed by AF488 secondary antibody (2 µg/ml), showing nuclear and endoplasmic reticulum staining. The nuclear stain is DAPI (blue). Negative control: Unimmunized goat IgG (10 µg/ml) followed by AF488 secondary antibody (2 µg/ml).



Flow cytometric analysis of paraformaldehyde fixed A431 cells (blue line), permeabilized with 0.5% Triton. Primary incubation 1hr (10 µg/ml) followed by AF488 secondary antibody (1 µg/ml). IgG control: Unimmunized goat IgG (10 µg/ml) followed by AF488 secondary antibody.

SYVN1 Antibody is a Goat Polyclonal antibody against SYVN1.

Target: E3 Ubiquitin-Protein Ligase Synoviolin (SYVN1)

Clonality: Polyclonal

Reactivity: Human, Rat

Tested Applications: P-ELISA, WB, IF/ICC, FCM

Host: Goat

Recommended dilutions: P-ELISA: 1/32000. Optimal dilutions/concentrations should be determined by the end user.

Conjugation: Unconjugated

Datasheet

Version: 3.0.0
Revision date: 27 Nov 2024



Immunogen:	abx616141 - Internal region: C-HERQHLEARLQS
Isotype:	IgG
Form:	Liquid
Purification:	Purified from goat serum by ammonium sulphate precipitation followed by antigen affinity chromatography using the immunizing peptide.
Storage:	Aliquot and store at -20°C. Avoid repeated freeze/thaw cycles.
Gene Symbol:	SYVN1
GeneID:	84447 361712
NCBI Accession:	NP_115807.1, NP_757385.1
Buffer:	Tris saline, pH 7.3, containing 0.02% sodium azide and 0.5% bovine serum albumin.
Concentration:	0.5 mg/ml
Note:	This product is for research use only.

For Reference Only