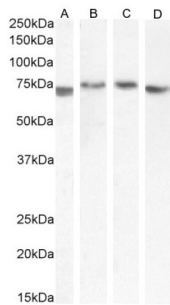
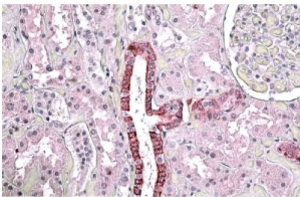


Transforming Growth Factor Beta Induced Protein (TGFB1) Antibody

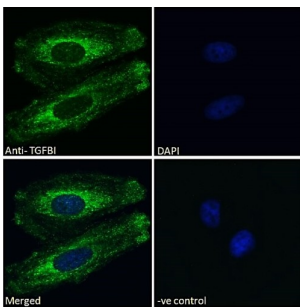
Catalogue No.: abx431665



abx431665 (0.3 µg/ml) staining of Human Kidney (A), Colorectal cancer (B), (0.1 µg/ml) Human Prostate (C) and Rat Kidney (D) lysate (35 µg protein in RIPA buffer). Detected by chemiluminescence.



abx431665 (3.8 µg/ml) staining of paraffin embedded Human Kidney. Steamed antigen retrieval with citrate buffer pH 6, AP-staining.



Immunofluorescence analysis of paraformaldehyde fixed HeLa cells, permeabilized with 0.15% Triton. Primary incubation 1hr (10 µg/ml) followed by Alexa Fluor 488 secondary antibody (2 µg/ml), showing golgi and membrane staining. The nuclear stain is DAPI (blue). Negative control: Unimmunized goat IgG (10 µg/ml) followed by Alexa Fluor 488 secondary antibody (2 µg/ml).

TGFB1 Antibody is a Goat Polyclonal antibody against TGFB1.

Target: Transforming Growth Factor Beta Induced Protein (TGFB1)

Clonality: Polyclonal

Reactivity: Human, Rat

Tested Applications: P-ELISA, WB, IHC, IF/ICC

Host: Goat

Recommended dilutions: P-ELISA: 1/32000. Optimal dilutions/concentrations should be determined by the end user.

Conjugation: Unconjugated

Datasheet

Version: 2.0.0
Revision date: 28 Apr 2025



Immunogen:	abx616127 - Internal region: C-QLYTDRTTEKLRPE
Isotype:	IgG
Form:	Liquid
Purification:	Purified from goat serum by ammonium sulphate precipitation followed by antigen affinity chromatography using the immunizing peptide.
Storage:	Aliquot and store at -20°C. Avoid repeated freeze/thaw cycles.
Gene Symbol:	TGFBI
GeneID:	7045 21810 24511
NCBI Accession:	NP_000349.1
Buffer:	Tris saline, pH 7.3, containing 0.02% sodium azide and 0.5% bovine serum albumin.
Concentration:	0.5 mg/ml
Note:	THIS PRODUCT IS FOR RESEARCH USE ONLY. NOT FOR USE IN DIAGNOSTIC, THERAPEUTIC OR COSMETIC PROCEDURES. NOT FOR HUMAN OR ANIMAL CONSUMPTION.

For Reference Only