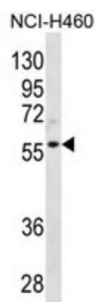


Cyclin-L2 (CCNL2) Antibody

Catalogue No.: abx026781



CCNL2 is a transcriptional regulator which participates in regulating the pre-mRNA splicing process. Also modulates the expression of critical apoptotic factor, leading to cell apoptosis.

Target:	Cyclin-L2 (CCNL2)
Clonality:	Polyclonal
Reactivity:	Human
Tested Applications:	ELISA, WB
Host:	Rabbit
Recommended dilutions:	WB: 1/1000. Optimal dilutions/concentrations should be determined by the end user.
Conjugation:	Unconjugated
Immunogen:	KLH-conjugated synthetic peptide between 338-366 amino acids from the Central region of human CCNL2.
Isotype:	IgG
Form:	Liquid
Purification:	Purified through a protein A column, followed by peptide affinity purification.
Storage:	Aliquot and store at -20°C. Avoid repeated freeze/thaw cycles.
UniProt Primary AC:	Q96S94 (UniProt , ExPASy)
Gene Symbol:	CCNL2

Datasheet

Version: 2.0.0

Revision date: 17 Apr 2025



KEGG: hsa:81669

String: [9606.ENSP00000383611](#)

Molecular Weight: Calculated MW: 58.1 kDa

Buffer: PBS containing 0.09% sodium azide.

Note: THIS PRODUCT IS FOR RESEARCH USE ONLY. NOT FOR USE IN DIAGNOSTIC, THERAPEUTIC OR COSMETIC PROCEDURES. NOT FOR HUMAN OR ANIMAL CONSUMPTION.

For Reference Only