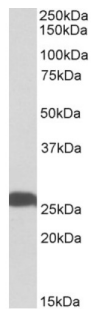
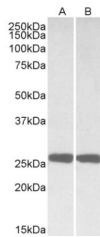


Ubiquitin Carboxyl Terminal Hydrolase L1 (UCHL1) Antibody

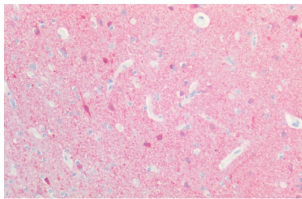
Catalogue No.: abx431695



abx431695 (0.01 µg/ml) staining of Human Hippocampus lysate (35 µg protein in RIPA buffer). Primary incubation was 1 hour. Detected by chemiluminescence.



abx431695 (0.01 µg/ml) staining of Mouse (A) and Rat (B) Brain lysates (35 µg protein in RIPA buffer). Primary incubation was 1 hour. Detected by chemiluminescence.



abx431695 (2.5 µg/ml) staining of paraffin embedded Human Cortex. Steamed antigen retrieval with citrate buffer Ph 6, AP-staining.

UCHL1 Antibody is a Goat Polyclonal antibody against UCHL1.

Target: Ubiquitin Carboxyl Terminal Hydrolase L1 (UCHL1)

Clonality: Polyclonal

Reactivity: Human, Mouse, Rat

Tested Applications: P-ELISA, WB, IHC

Host: Goat

Recommended dilutions: P-ELISA: 1/16000. Optimal dilutions/concentrations should be determined by the end user.

Conjugation: Unconjugated

Datasheet

Version: 4.0.0
Revision date: 12 Mar 2025



Immunogen:	abx616322 - Internal region, 58-68 AA: C-QHENFRKKQIE
Isotype:	IgG
Form:	Liquid
Purification:	Purified from goat serum by ammonium sulphate precipitation followed by antigen affinity chromatography using the immunizing peptide.
Storage:	Aliquot and store at -20°C. Avoid repeated freeze/thaw cycles.
Gene Symbol:	UCHL1
GeneID:	7345 22223 29545
NCBI Accession:	NP_004172.2
Buffer:	Tris saline, pH 7.3, containing 0.02% sodium azide and 0.5% bovine serum albumin.
Concentration:	0.5 mg/ml
Note:	THIS PRODUCT IS FOR RESEARCH USE ONLY. NOT FOR USE IN DIAGNOSTIC, THERAPEUTIC OR COSMETIC PROCEDURES. NOT FOR HUMAN OR ANIMAL CONSUMPTION.

For Reference Only