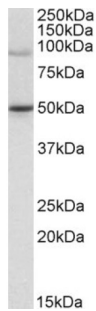
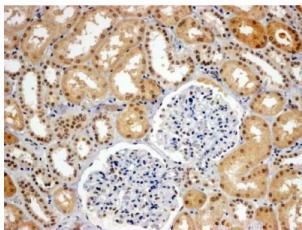


## ATPase WRNIP1 (WHIP) Antibody

Catalogue No.: abx430313



abx430313 (1 µg/ml) staining of Jurkat lysate (35 µg protein in RIPA buffer). Primary incubation was 1 hour. Detected by chemiluminescence.



abx430313 (4 µg/ml) staining of paraffin embedded Human Kidney. Steamed antigen retrieval with Tris/EDTA buffer pH 9, HRP-staining.

WHIP Antibody is a Goat Polyclonal antibody against WHIP.

**Target:** ATPase WRNIP1 (WHIP)

**Clonality:** Polyclonal

**Reactivity:** Human

**Tested Applications:** P-ELISA, WB, IHC

**Host:** Goat

**Recommended dilutions:** P-ELISA: 1/32000. Optimal dilutions/concentrations should be determined by the end user.

**Conjugation:** Unconjugated

**Immunogen:** [abx269045](#) - C-Terminus: EELRGVDFKQRRC

**Isotype:** IgG

**Form:** Liquid

**Purification:** Purified from goat serum by ammonium sulphate precipitation followed by antigen affinity chromatography using the immunizing peptide.

# Datasheet

Version: 3.0.0

Revision date: 06 Apr 2025



<b>Storage:</b>	Aliquot and store at -20°C. Avoid repeated freeze/thaw cycles.
<b>Gene Symbol:</b>	WRNIP1
<b>GeneID:</b>	<a href="#">56897</a>
<b>NCBI Accession:</b>	NP_064520.2, NP_569079.1
<b>Buffer:</b>	Tris saline, pH 7.3, containing 0.02% sodium azide and 0.5% bovine serum albumin.
<b>Concentration:</b>	0.5 mg/ml
<b>Note:</b>	THIS PRODUCT IS FOR RESEARCH USE ONLY. NOT FOR USE IN DIAGNOSTIC, THERAPEUTIC OR COSMETIC PROCEDURES. NOT FOR HUMAN OR ANIMAL CONSUMPTION.

For Reference Only