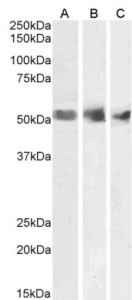


# Datasheet

Version: 4.0.0  
Revision date: 18 Mar 2025

## Wilms Tumor 1 (WT1) Antibody

Catalogue No.: abx430953



abx430953 (1 µg/ml) staining of Human Spleen (A), Kidney (B) and Testis (C) lysates (35 µg protein in RIPA buffer). Primary incubation was 1 hour. Detected by chemiluminescence.

Wilms tumor 1 Antibody is a Goat Polyclonal antibody against Wilms tumor 1.

<b>Target:</b>	Wilms Tumor 1 (WT1)
<b>Clonality:</b>	Polyclonal
<b>Reactivity:</b>	Human
<b>Tested Applications:</b>	P-ELISA, WB
<b>Host:</b>	Goat
<b>Recommended dilutions:</b>	P-ELISA: 1/32000. Optimal dilutions/concentrations should be determined by the end user.
<b>Conjugation:</b>	Unconjugated
<b>Immunogen:</b>	<a href="#">abx269943</a> - N-Terminus: QDPASTCVPEPASQH
<b>Isotype:</b>	IgG
<b>Form:</b>	Liquid
<b>Purification:</b>	Purified from goat serum by ammonium sulphate precipitation followed by antigen affinity chromatography using the immunizing peptide.
<b>Storage:</b>	Aliquot and store at -20°C. Avoid repeated freeze/thaw cycles.
<b>Gene Symbol:</b>	WT1
<b>GeneID:</b>	<a href="#">7490</a>
<b>NCBI Accession:</b>	NP_000369.3, NP_077742.2, NP_077743.2, NP_077744.3

# Datasheet

Version: 4.0.0  
Revision date: 18 Mar 2025



**Buffer:** Tris saline, pH 7.3, containing 0.02% sodium azide and 0.5% bovine serum albumin.

**Concentration:** 0.5 mg/ml

**Note:** THIS PRODUCT IS FOR RESEARCH USE ONLY. NOT FOR USE IN DIAGNOSTIC, THERAPEUTIC OR COSMETIC PROCEDURES. NOT FOR HUMAN OR ANIMAL CONSUMPTION.

For Reference Only