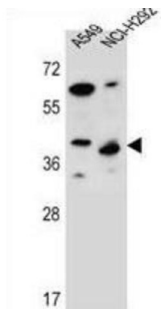


Leucine-Rich Repeat-Containing Protein 67 (LRRC67) Antibody

Catalogue No.: abx026825



LRRC67 Antibody is a Rabbit Polyclonal antibody against LRRC67.

Target:	Leucine-Rich Repeat-Containing Protein 67 (LRRC67)
Clonality:	Polyclonal
Reactivity:	Human
Tested Applications:	ELISA, WB
Host:	Rabbit
Recommended dilutions:	WB: 1/1000. Optimal dilutions/concentrations should be determined by the end user.
Conjugation:	Unconjugated
Immunogen:	KLH-conjugated synthetic peptide between 238-266 amino acids from the C-terminal region of human LRRC67.
Isotype:	IgG
Form:	Liquid
Purification:	Purified through a protein A column, followed by peptide affinity purification.
Storage:	Aliquot and store at -20°C. Avoid repeated freeze/thaw cycles.
UniProt Primary AC:	Q7Z4L9 (UniProt , ExpASy)
Gene Symbol:	PPP1R42
KEGG:	hsa:286187

Datasheet

Version: 3.0.0

Revision date: 10 Mar 2025



String: [9606.ENSF00000315035](#)

Molecular Weight: Calculated MW: 35.5 kDa

Buffer: PBS containing 0.09% sodium azide.

Specificity: Predicted to react with Monkey PPP1R42.

Note: THIS PRODUCT IS FOR RESEARCH USE ONLY. NOT FOR USE IN DIAGNOSTIC, THERAPEUTIC OR COSMETIC PROCEDURES. NOT FOR HUMAN OR ANIMAL CONSUMPTION.

For Reference Only