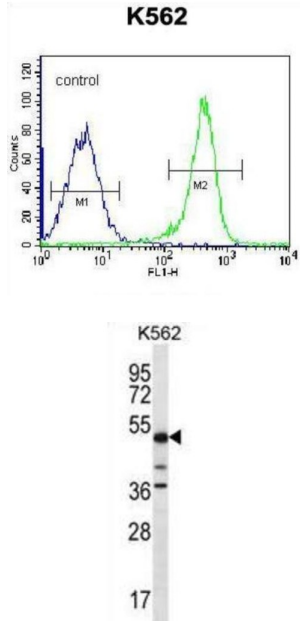


Proline-Serine-Threonine Phosphatase-Interacting Protein 1 (PSTPIP1) Antibody

Catalogue No.: abx026851



The protein encoded by this gene binds to the cytoplasmic tail of CD2, an effector of T cell activation and adhesion, negatively affecting CD2-triggered T cell activation. The encoded protein appears to be a scaffold protein and a regulator of the actin cytoskeleton. It has also been shown to bind ABL1, PTPN18, WAS, CD2AP, and PTPN12. Mutations in this gene are a cause of PAPA syndrome.

Target: Proline-Serine-Threonine Phosphatase-Interacting Protein 1 (PSTPIP1)

Clonality: Polyclonal

Reactivity: Human

Tested Applications: ELISA, WB, FCM

Host: Rabbit

Recommended dilutions: WB: 1/1000, FCM: 1/10 - 1/50. Optimal dilutions/concentrations should be determined by the end user.

Conjugation: Unconjugated

Immunogen: KLH-conjugated synthetic peptide between 89-118 amino acids from the N-terminal region of human PSTPIP1.

Isotype: IgG

Datasheet

Version: 3.0.0
Revision date: 18 Jan 2025



Form:	Liquid
Purification:	Purified through a protein A column, followed by peptide affinity purification.
Storage:	Aliquot and store at -20°C. Avoid repeated freeze/thaw cycles.
UniProt Primary AC:	O43586 (UniProt , ExPASy)
Gene Symbol:	PSTPIP1
KEGG:	hsa:9051
String:	9606.ENSP00000452746
Molecular Weight:	Calculated MW: 47.6 kDa
Buffer:	PBS containing 0.09% sodium azide.
Specificity:	Predicted to react with Mouse PSTPIP1.
Note:	This product is for research use only.

For Reference Only