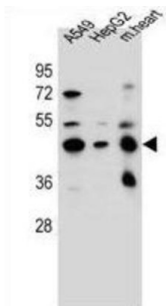
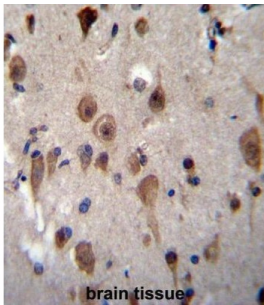


Leucine-Rich Repeat-Containing Protein 28 (LRRC28) Antibody

Catalogue No.: abx026867



LRRC28 contains 11 LRR (leucine-rich) repeats. The function of the LRRC28 protein is not known.

Target:	Leucine-Rich Repeat-Containing Protein 28 (LRRC28)
Clonality:	Polyclonal
Reactivity:	Human, Mouse
Tested Applications:	ELISA, WB, IHC
Host:	Rabbit
Recommended dilutions:	WB: 1/1000, IHC-P: 1/10 - 1/50. Not tested in IHC-F. Optimal dilutions/concentrations should be determined by the end user.
Conjugation:	Unconjugated
Immunogen:	KLH-conjugated synthetic peptide between 314-342 amino acids from the C-terminal region of human LRRC28.
Isotype:	IgG
Form:	Liquid
Purification:	Purified through a protein A column, followed by peptide affinity purification.

Datasheet

Version: 1.0.0
Revision date: 28 Jan 2025



Storage: Aliquot and store at -20°C. Avoid repeated freeze/thaw cycles.

UniProt Primary AC: Q86X40 ([UniProt](#), [ExpASY](#))

Gene Symbol: LRRRC28

KEGG: hsa:123355

String: [9606.ENSP00000304923](#)

Molecular Weight: Calculated MW: 41.9 kDa

Buffer: PBS containing 0.09% sodium azide.

Specificity: Predicted to react with Cow LRRRC28.

Note: This product is for research use only.

For Reference Only