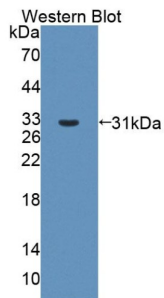
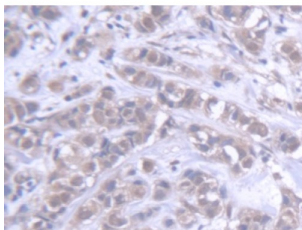


ATP-Binding Cassette Sub-Family B Member 6 (ABCB6) Antibody

Catalogue No.: abx130562



Western blot analysis of recombinant Human ABCB6 Protein.



IHC-P analysis of Human Breast Cancer Tissue, with DAB staining.

ABCB6 Antibody is a Rabbit Polyclonal against ABCB6.

- Target:** ATP-Binding Cassette Sub-Family B Member 6 (ABCB6)
- Clonality:** Polyclonal
- Reactivity:** Human
- Tested Applications:** WB, IHC, IF/ICC
- Host:** Rabbit
- Recommended dilutions:** WB: 0.01-2 µg/ml, IHC: 5-20 µg/ml, IF/ICC: 5-20 µg/ml. Optimal dilutions/concentrations should be determined by the end user.
- Conjugation:** Unconjugated
- Immunogen:** [abx650380](#) - Recombinant ABCB6 (Ile590-Arg842) expressed in E. coli
- Form:** Liquid
- Purification:** Purified by antigen-specific affinity chromatography, followed by Protein A affinity chromatography.
- Storage:** Aliquot and store at -20°C. Avoid repeated freeze/thaw cycles.

Datasheet

Version: 3.0.0

Revision date: 11 Mar 2025



UniProt Primary AC: Q9NP58 ([UniProt](#), [ExPASy](#))

Gene Symbol: ABCB6

GeneID: [10058](#)

OMIM: [111600](#)

NCBI Accession: NP_005680.1, NM_005689.2

HGNC: 47

KEGG: hsa:10058

Ensembl: ENSG00000115657

String: [9606.ENSP00000265316](#)

Buffer: 0.01 M PBS, pH 7.4, containing 0.05% Proclin-300, 50% glycerol.

Note: THIS PRODUCT IS FOR RESEARCH USE ONLY. NOT FOR USE IN DIAGNOSTIC, THERAPEUTIC OR COSMETIC PROCEDURES. NOT FOR HUMAN OR ANIMAL CONSUMPTION.

For Reference Only