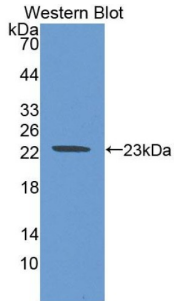
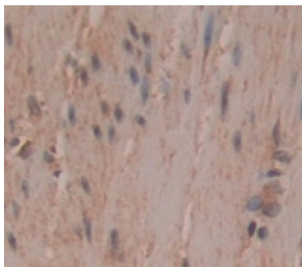


Coxsackie And Adenovirus Receptor Like Membrane Protein (CLMP) Antibody

Catalogue No.: abx130591



Western blot analysis of the recombinant protein.



IHC-P analysis of Human Tissue, with DAB staining.

CLMP Antibody is a Rabbit Polyclonal against CLMP.

- Target:** Coxsackie And Adenovirus Receptor Like Membrane Protein (CLMP)
- Clonality:** Polyclonal
- Reactivity:** Human
- Tested Applications:** WB, IHC, IF/ICC
- Host:** Rabbit
- Recommended dilutions:** WB: 0.5-2 µg/ml, IHC: 5-20 µg/ml, IF/ICC: 5-20 µg/ml. Optimal dilutions/concentrations should be determined by the end user.
- Conjugation:** Unconjugated
- Immunogen:** CLMP (Thr19-Ser183)
- Form:** Liquid
- Purification:** Purified by antigen-specific affinity chromatography, followed by Protein A affinity chromatography.

Datasheet

Version: 2.0.0

Revision date: 06 Oct 2024



Storage: Aliquot and store at -20°C. Avoid repeated freeze/thaw cycles.

UniProt Primary AC: Q9H6B4 ([UniProt](#), [ExPASy](#))

String: [9606.ENSP00000405577](#)

Buffer: 0.01 M PBS, pH 7.4, containing 0.05% Proclin-300, 50% glycerol.

Note: This product is for research use only.

For Reference Only