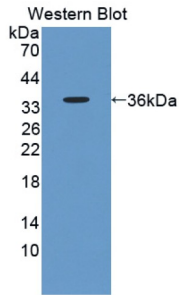
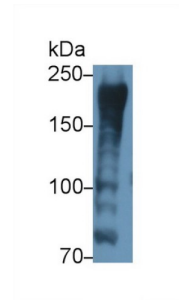


## A Kinase Anchor Protein 12 (AKAP12) Antibody

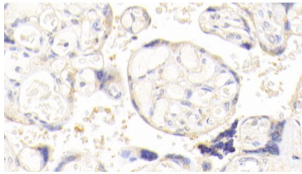
Catalogue No.: abx130632



Western blot analysis of recombinant protein human AKAP12.



Western blot analysis of Porcine Skeletal muscle lysate, using Human FOXP3 Antibody (2 µg/ml) and HRP-conjugated Goat Anti-Rabbit antibody.



IHC-P analysis of Human Placenta Tissue, with DAB staining.

A Kinase Anchor Protein 12 Antibody is a Rabbit Polyclonal against A Kinase Anchor Protein 12.

**Target:** A Kinase Anchor Protein 12 (AKAP12)

**Clonality:** Polyclonal

**Reactivity:** Human

**Tested Applications:** WB, IHC, IF/ICC

**Host:** Rabbit

**Recommended dilutions:** WB: 0.5-2 µg/ml, IHC: 5-20 µg/ml, IF/ICC: 5-20 µg/ml. Optimal dilutions/concentrations should be determined by the end user.

**Conjugation:** Unconjugated

# Datasheet

Version: 2.0.0  
Revision date: 31 Dec 2024



<b>Immunogen:</b>	<a href="#">abx165951</a> - Recombinant AKAP12 (Pro1485-Ser1782) expressed in E. coli
<b>Form:</b>	Liquid
<b>Purification:</b>	Purified by antigen-specific affinity chromatography, followed by Protein A affinity chromatography.
<b>Storage:</b>	Aliquot and store at -20°C. Avoid repeated freeze/thaw cycles.
<b>UniProt Primary AC:</b>	Q02952 ( <a href="#">UniProt</a> , <a href="#">ExpASY</a> )
<b>KEGG:</b>	hsa:9590
<b>String:</b>	<a href="#">9606.ENSP00000384537</a>
<b>Buffer:</b>	0.01 M PBS, pH 7.4, containing 0.05% Proclin-300, 50% glycerol.
<b>Specificity:</b>	Cross-reacts with Pig AKAP12.
<b>Note:</b>	This product is for research use only.

For Reference Only