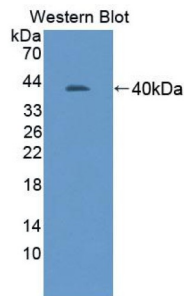


Adhesion Molecule With Ig Like Domain Protein 1 (AMIGO1) Antibody

Catalogue No.: abx130635



Western blot analysis of recombinant Human AMIGO1 protein.

AMIGO1 Antibody is a Rabbit Polyclonal against AMIGO1.

| | |
|-------------------------------|---|
| Target: | Adhesion Molecule With Ig Like Domain Protein 1 (AMIGO1) |
| Clonality: | Polyclonal |
| Reactivity: | Human |
| Tested Applications: | WB, IHC, IF/ICC |
| Host: | Rabbit |
| Recommended dilutions: | WB: 0.01-2 µg/ml, IHC: 5-20 µg/ml, IF/ICC: 5-20 µg/ml. Optimal dilutions/concentrations should be determined by the end user. |
| Conjugation: | Unconjugated |
| Immunogen: | abx650826 -Recombinant AMIGO1 (Gly28-Thr372) expressed in E.coli. |
| Form: | Liquid |
| Purification: | Purified by antigen-specific affinity chromatography, followed by Protein A affinity chromatography. |
| Storage: | Aliquot and store at -20°C. Avoid repeated freeze/thaw cycles. |
| UniProt Primary AC: | Q86WK6 (UniProt , ExPASy) |
| KEGG: | hsa:57463 |
| String: | 9606.ENSP00000358880 |
| Buffer: | PBS, pH 7.4, containing 0.02% Sodium azide, 50% glycerol. |

Datasheet

Version: 5.0.0
Revision date: 11 Feb 2025



Specificity: Cross-reacts with Mouse and Rat AMIGO1.

Concentration: 0.97 mg/ml

Note: This product is for research use only.

For Reference Only