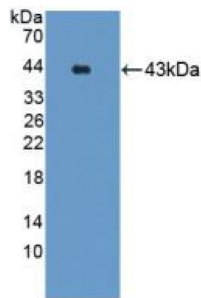


# Datasheet

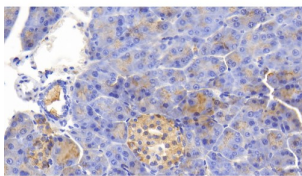
Version: 4.0.0  
Revision date: 15 Jan 2025

## Gastrin Releasing Peptide Receptor (GRPR) Antibody

Catalogue No.: abx130700



Western blot analysis of recombinant Mouse GRPR.



IHC-P analysis of Mouse Pancreas tissue, with DAB staining, using Rabbit Anti-Mouse GRPR Antibody (20 µg/ml) and HRP-conjugated Goat Anti-Rabbit antibody ([abx400043](#), 2 µg/ml).

GRPR Antibody is a Rabbit Polyclonal against GRPR.

<b>Target:</b>	Gastrin Releasing Peptide Receptor (GRPR)
<b>Clonality:</b>	Polyclonal
<b>Reactivity:</b>	Mouse
<b>Tested Applications:</b>	WB, IHC, IF/ICC
<b>Host:</b>	Rabbit
<b>Recommended dilutions:</b>	WB: 0.01-2 µg/ml, IHC: 5-20 µg/ml, IF/ICC: 5-20 µg/ml. Optimal dilutions/concentrations should be determined by the end user.
<b>Conjugation:</b>	Unconjugated
<b>Immunogen:</b>	<a href="#">abx650010</a> - Recombinant GRPR (Met1-Leu116) expressed in E. coli
<b>Form:</b>	Liquid
<b>Purification:</b>	Purified by antigen-specific affinity chromatography, followed by Protein A affinity chromatography.
<b>Storage:</b>	Aliquot and store at -20°C. Avoid repeated freeze/thaw cycles.

# Datasheet

Version: 4.0.0  
Revision date: 15 Jan 2025



**UniProt Primary AC:** P21729 ([UniProt](#), [ExPASy](#))

**Gene Symbol:** GRPR

**GeneID:** [14829](#)

**KEGG:** mmu:14829

**String:** [10090.ENSMUSP00000033730](#)

**Buffer:** 0.01 M PBS, pH 7.4, containing 0.05% Proclin-300, 50% glycerol.

**Specificity:** Cross-reacts with Human and Rat GRPR.

**Concentration:** 0.71 mg/ml

**Note:** This product is for research use only.

For Reference Only