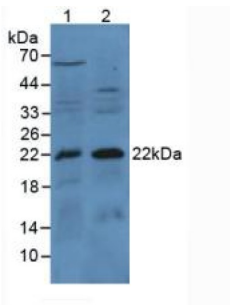
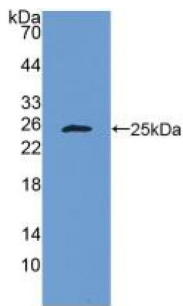


Bcl2 Associated X Protein (BAX) Antibody

Catalogue No.: abx130707



Western blot analysis of (1) Mouse Kidney Tissue and (2) Mouse Lung Tissue.



Western blot analysis of recombinant Human Bax.

Bcl2 Associated X Protein Antibody is a Rabbit Polyclonal against Bcl2 Associated X Protein.

- Target:** Bcl2 Associated X Protein (BAX)
- Clonality:** Polyclonal
- Reactivity:** Human
- Tested Applications:** WB, IHC, IF/ICC
- Host:** Rabbit
- Recommended dilutions:** WB: 0.5-2 µg/ml, IHC: 5-20 µg/ml, IF/ICC: 5-20 µg/ml. Optimal dilutions/concentrations should be determined by the end user.
- Conjugation:** Unconjugated
- Immunogen:** Met1-Gly192
- Form:** Liquid
- Purification:** Purified by antigen-specific affinity chromatography, followed by Protein A affinity chromatography.
- Storage:** Aliquot and store at -20°C. Avoid repeated freeze/thaw cycles.

Datasheet

Version: 1.0.0

Revision date: 03 Dec 2024



UniProt Primary AC: Q07812 ([UniProt](#), [ExPASy](#))

Buffer: 0.01 M PBS, pH 7.4, containing 0.05% Proclin-300, 50% glycerol.

Concentration: 1 mg/ml

Note: This product is for research use only.

For Reference Only