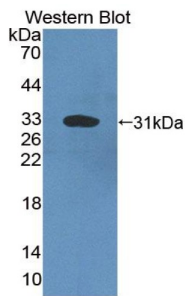
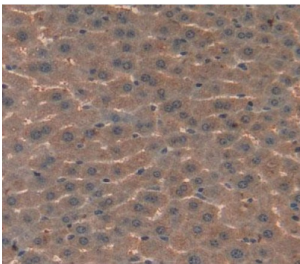


Complement C4 (C4) Antibody

Catalogue No.: abx130746



Western blot analysis of the recombinant protein.



IHC-P analysis of Kidney tissue, with DAB staining.

Complement C4 (C4) Antibody is a Rabbit Polyclonal against Complement C4 (C4).

Target: Complement C4 (C4)

Clonality: Polyclonal

Reactivity: Mouse

Tested Applications: WB, IHC, IF/ICC

Host: Rabbit

Recommended dilutions: WB: 0.01-2 µg/ml, IHC: 5-20 µg/ml, IF/ICC: 5-20 µg/ml. Optimal dilutions/concentrations should be determined by the end user.

Conjugation: Unconjugated

Immunogen: C4 (Gln126-Ser366)

Form: Liquid

Purification: Purified by antigen-specific affinity chromatography, followed by Protein A affinity chromatography.

Storage: Aliquot and store at -20°C. Avoid repeated freeze/thaw cycles.

Datasheet

Version: 2.0.0

Revision date: 26 Mar 2025



UniProt Primary AC: P01029 ([UniProt](#), [ExPASy](#))

KEGG: mmu:12268

String: [10090.ENSMUSP00000069418](#)

Buffer: 0.01 M PBS, pH 7.4, containing 0.05% Proclin-300, 50% glycerol.

Note: THIS PRODUCT IS FOR RESEARCH USE ONLY. NOT FOR USE IN DIAGNOSTIC, THERAPEUTIC OR COSMETIC PROCEDURES. NOT FOR HUMAN OR ANIMAL CONSUMPTION.

For Reference Only