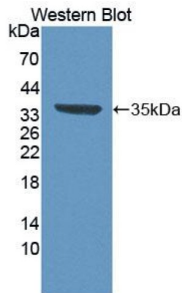


Datasheet

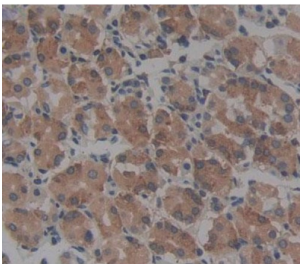
Version: 3.0.0
Revision date: 24 Apr 2025

Carbonyl Reductase 1 (CBR1) Antibody

Catalogue No.: abx130785



Western blot analysis of the recombinant protein.



IHC-P analysis of Kidney tissue, with DAB staining.

Carbonyl Reductase 1 Antibody is a Rabbit Polyclonal against Carbonyl Reductase 1.

Target:	Carbonyl Reductase 1 (CBR1)
Clonality:	Polyclonal
Reactivity:	Human
Tested Applications:	WB, IHC, IF/ICC
Host:	Rabbit
Recommended dilutions:	WB: 0.01-2 µg/ml, IHC: 5-20 µg/ml, IF/ICC: 5-20 µg/ml. Optimal dilutions/concentrations should be determined by the end user.
Conjugation:	Unconjugated
Immunogen:	CBR1 (Ser2-Trp277)
Form:	Liquid
Purification:	Purified by antigen-specific affinity chromatography, followed by Protein A affinity chromatography.
Storage:	Aliquot and store at -20°C. Avoid repeated freeze/thaw cycles.

Datasheet

Version: 3.0.0

Revision date: 24 Apr 2025



Buffer: 0.01 M PBS, pH 7.4, containing 0.05% Proclin-300, 50% glycerol.

Note: THIS PRODUCT IS FOR RESEARCH USE ONLY. NOT FOR USE IN DIAGNOSTIC, THERAPEUTIC OR COSMETIC PROCEDURES. NOT FOR HUMAN OR ANIMAL CONSUMPTION.

For Reference Only