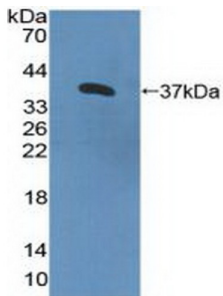
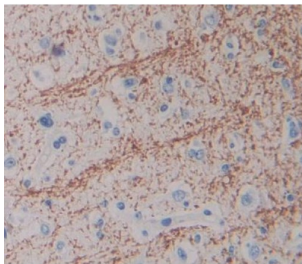


Interleukin 8 Receptor Beta / IL8RB (CXCR2) Antibody

Catalogue No.: abx130805



Western blot analysis of recombinant Human IL8Rb.



IHC-P analysis of brain tissue, with DAB staining.

Interleukin 8 Receptor Beta Antibody is a Rabbit Polyclonal against Interleukin 8 Receptor Beta.

Target:	Interleukin 8 Receptor Beta / IL8RB (CXCR2)
Clonality:	Polyclonal
Reactivity:	Human
Tested Applications:	WB, IHC, IF/ICC
Host:	Rabbit
Recommended dilutions:	WB: 1-5 µg/ml, IHC: 5-20 µg/ml, IF/ICC: 5-20 µg/ml. Optimal dilutions/concentrations should be determined by the end user.
Conjugation:	Unconjugated
Immunogen:	IL8Rb (Met1-Leu57)
Form:	Liquid
Purification:	Purified by antigen-specific affinity chromatography, followed by Protein A affinity chromatography.
Storage:	Aliquot and store at -20°C. Avoid repeated freeze/thaw cycles.

Datasheet

Version: 3.0.0
Revision date: 13 Mar 2025



UniProt Primary AC: P25025 ([UniProt](#), [ExPASy](#))

KEGG: hsa:3579

String: [9606.ENSP00000319635](#)

Buffer: 0.01 M PBS, pH 7.4, containing 0.05% Proclin-300, 50% glycerol.

Note: THIS PRODUCT IS FOR RESEARCH USE ONLY. NOT FOR USE IN DIAGNOSTIC, THERAPEUTIC OR COSMETIC PROCEDURES. NOT FOR HUMAN OR ANIMAL CONSUMPTION.

For Reference Only