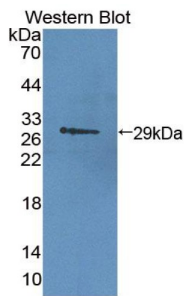
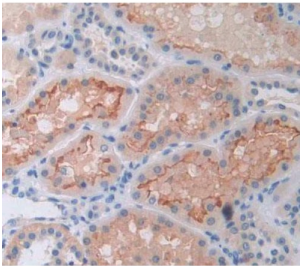


Cyclic ADP Ribose Hydrolase (CD38) Antibody

Catalogue No.: abx130838



Western blot analysis of the recombinant protein.



IHC-P analysis of Kidney tissue, with DAB staining.

Cyclic ADP Ribose Hydrolase Antibody is a Rabbit Polyclonal against Cyclic ADP Ribose Hydrolase.

Target:	Cyclic ADP Ribose Hydrolase (CD38)
Clonality:	Polyclonal
Reactivity:	Human
Tested Applications:	WB, IHC, IF/ICC
Host:	Rabbit
Recommended dilutions:	WB: 0.01-2 µg/ml, IHC: 5-20 µg/ml, IF/ICC: 5-20 µg/ml. Optimal dilutions/concentrations should be determined by the end user.
Conjugation:	Unconjugated
Immunogen:	cADPRH (Asp81-Ser298)
Form:	Liquid
Purification:	Purified by antigen-specific affinity chromatography, followed by Protein A affinity chromatography.
Storage:	Aliquot and store at -20°C. Avoid repeated freeze/thaw cycles.

Datasheet

Version: 3.0.0
Revision date: 15 Jan 2025



UniProt Primary AC: P28907 ([UniProt](#), [ExPASy](#))

KEGG: hsa:952

String: [9606.ENSP00000226279](#)

Buffer: 0.01 M PBS, pH 7.4, containing 0.05% Proclin-300, 50% glycerol.

Note: This product is for research use only.

For Reference Only