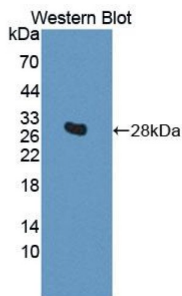


Datasheet

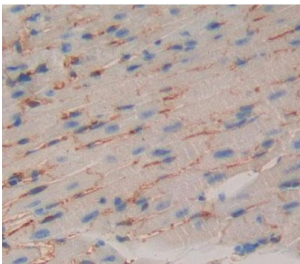
Version: 2.0.0
Revision date: 28 Dec 2024

Cadherin, Myotubule (CDH15) Antibody

Catalogue No.: abx130856



Western blot analysis of the recombinant protein.



IHC-P analysis of Kidney tissue, with DAB staining.

Cadherin, Myotubule Antibody is a Rabbit Polyclonal against Cadherin, Myotubule.

Target: Cadherin, Myotubule (CDH15)

Clonality: Polyclonal

Reactivity: Human

Tested Applications: WB, IHC, IF/ICC

Host: Rabbit

Recommended dilutions: WB: 0.5-2 µg/ml, IHC: 5-20 µg/ml, IF/ICC: 5-20 µg/ml. Optimal dilutions/concentrations should be determined by the end user.

Conjugation: Unconjugated

Immunogen: CDH15 (Leu61-Phe260)

Form: Liquid

Purification: Purified by antigen-specific affinity chromatography, followed by Protein A affinity chromatography.

Storage: Aliquot and store at -20°C. Avoid repeated freeze/thaw cycles.

Datasheet

Version: 2.0.0

Revision date: 28 Dec 2024



Buffer: 0.01 M PBS, pH 7.4, containing 0.05% Proclin-300, 50% glycerol.

Note: This product is for research use only.

For Reference Only