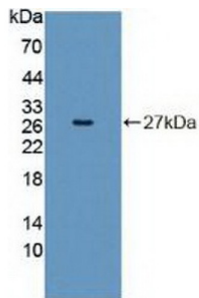
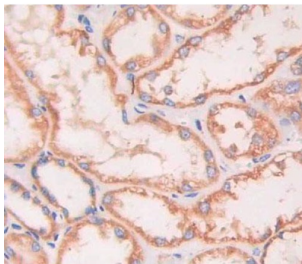


Insulin Receptor Related Receptor (INSRR) Antibody

Catalogue No.: abx131216



Western blot analysis of recombinant Human INSRR.



IHC-P analysis of kidney tissue, with DAB staining.

Insulin Receptor Related Receptor Antibody is a Rabbit Polyclonal against Insulin Receptor Related Receptor.

Target: Insulin Receptor Related Receptor (INSRR)

Clonality: Polyclonal

Reactivity: Human

Tested Applications: WB, IHC, IF/ICC

Host: Rabbit

Recommended dilutions: WB: 1-5 µg/ml, IHC: 5-20 µg/ml, IF/ICC: 5-20 µg/ml. Optimal dilutions/concentrations should be determined by the end user.

Conjugation: Unconjugated

Immunogen: INSRR (Gly1090-Pro1295)

Form: Liquid

Purification: Purified by antigen-specific affinity chromatography, followed by Protein A affinity chromatography.

Storage: Aliquot and store at -20°C. Avoid repeated freeze/thaw cycles.

Datasheet

Version: 2.0.0
Revision date: 27 Dec 2024



Buffer: 0.01 M PBS, pH 7.4, containing 0.05% Proclin-300, 50% glycerol.

Note: This product is for research use only.

For Reference Only