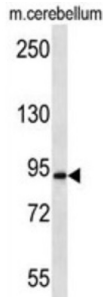


Amyloid-Beta A4 Precursor Protein-Binding Family A Member 2 (APBA2) Antibody

Catalogue No.: abx026947



The protein encoded by this gene is a member of the X11 protein family. It is a neuronal adapter protein that interacts with the Alzheimer's disease amyloid precursor protein (APP). It stabilizes APP and inhibits production of proteolytic APP fragments including the A beta peptide that is deposited in the brains of Alzheimer's disease patients. This gene product is believed to be involved in signal transduction processes. It is also regarded as a putative vesicular trafficking protein in the brain that can form a complex with the potential to couple synaptic vesicle exocytosis to neuronal cell adhesion. Multiple transcript variants encoding different isoforms have been found for this gene. [provided by RefSeq].

Target:	Amyloid-Beta A4 Precursor Protein-Binding Family A Member 2 (APBA2)
Clonality:	Polyclonal
Reactivity:	Mouse
Tested Applications:	ELISA, WB
Host:	Rabbit
Recommended dilutions:	WB: 1/1000. Optimal dilutions/concentrations should be determined by the end user.
Conjugation:	Unconjugated
Immunogen:	KLH-conjugated synthetic peptide between 307-336 amino acids from the Central region of human APBA2.
Isotype:	IgG
Form:	Liquid
Purification:	Purified through a protein A column, followed by peptide affinity purification.
Storage:	Aliquot and store at -20°C. Avoid repeated freeze/thaw cycles.

Datasheet

Version: 3.0.0
Revision date: 14 Sep 2024



UniProt Primary AC: Q99767 ([UniProt](#), [ExPASy](#))

Gene Symbol: APBA2

KEGG: hsa:321

String: [9606.ENSP00000453293](#)

Molecular Weight: Calculated MW: 82.5 kDa

Buffer: PBS containing 0.09% sodium azide.

Specificity: Predicted to react with Rat APBA2.

Note: This product is for research use only.

For Reference Only