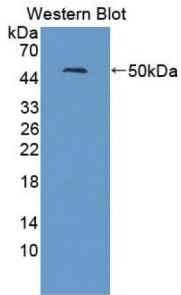
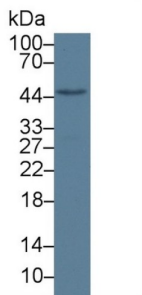


Oxysterols Receptor LXR-Beta (NR1H2) Antibody

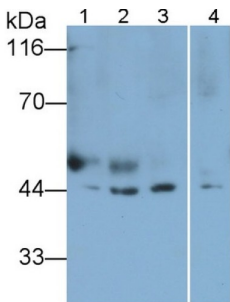
Catalogue No.: abx131382



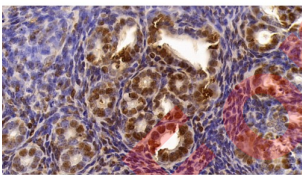
Western blot analysis of recombinant Mouse NR1H2 Protein.



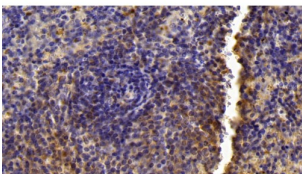
Western blot analysis of Mouse Liver lysate, using Rabbit Anti-Mouse LXRb Antibody (1 µg/ml) and HRP-conjugated Goat Anti-Rabbit antibody ([abx400043](#), 0.2 µg/ml).



Western blot analysis of (1) Human lung lysate, (2) Pig lung lysate, (3) Rat lung lysate, and (4) A549 cell lysate, using Rabbit Anti-Mouse LXRb Antibody (0.2 µg/ml) and HRP-conjugated Goat Anti-Rabbit antibody ([abx400043](#), 0.2 µg/ml).



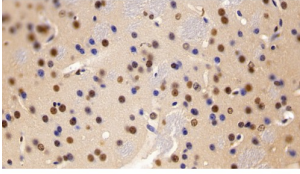
IHC-P analysis of Mouse uterus tissue, with DAB staining, using Rabbit Anti-Mouse LXRb Antibody (20 µg/ml) and HRP-conjugated Goat Anti-Rabbit antibody ([abx400043](#), 2 µg/ml).



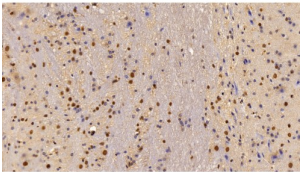
IHC-P analysis of Mouse spleen tissue, with DAB staining, using Rabbit Anti-Mouse LXRb Antibody (20 µg/ml) and HRP-conjugated Goat Anti-Rabbit antibody ([abx400043](#), 2 µg/ml).

Datasheet

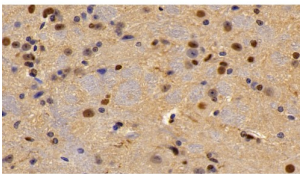
Version: 3.0.0
Revision date: 12 Mar 2025



IHC-P analysis of Mouse cerebrum tissue, with DAB staining, using Rabbit Anti-Mouse LXRb Antibody (20 µg/ml) and HRP-conjugated Goat Anti-Rabbit antibody ([abx400043](#), 2 µg/ml).



IHC-P analysis of Mouse cerebellum tissue, with DAB staining, using Rabbit Anti-Mouse LXRb Antibody (20 µg/ml) and HRP-conjugated Goat Anti-Rabbit antibody ([abx400043](#), 2 µg/ml).



IHC-P analysis of Mouse spinal cord tissue, with DAB staining, using Rabbit Anti-Mouse LXRb Antibody (20 µg/ml) and HRP-conjugated Goat Anti-Rabbit antibody ([abx400043](#), 2 µg/ml).

Liver X Receptor Beta Antibody is a Rabbit Polyclonal against Liver X Receptor Beta.

Target: Oxysterols Receptor LXR-Beta (NR1H2)

Clonality: Polyclonal

Reactivity: Mouse

Tested Applications: WB, IHC, IF/ICC

Host: Rabbit

Recommended dilutions: WB: 0.01-2 µg/ml, IHC: 5-20 µg/ml, IF/ICC: 5-20 µg/ml. Optimal dilutions/concentrations should be determined by the end user.

Conjugation: Unconjugated

Immunogen: [abx650300](#) - Recombinant LXRb (Met1-Glu446) expressed in E. coli

Datasheet

Version: 3.0.0
Revision date: 12 Mar 2025



Form:	Liquid
Purification:	Purified by antigen-specific affinity chromatography, followed by Protein A affinity chromatography.
Storage:	Aliquot and store at -20°C. Avoid repeated freeze/thaw cycles.
UniProt Primary AC:	Q60644 (UniProt , ExPASy)
Gene Symbol:	NR1H2
GeneID:	22260
KEGG:	mmu:22260
String:	10090.ENSMUSP00000103544
Buffer:	0.01 M PBS, pH 7.4, containing 0.05% Proclin-300, 50% glycerol.
Specificity:	Cross-reacts with Human, Rat and Pig LXRb.
Concentration:	0.38 mg/ml
Note:	THIS PRODUCT IS FOR RESEARCH USE ONLY. NOT FOR USE IN DIAGNOSTIC, THERAPEUTIC OR COSMETIC PROCEDURES. NOT FOR HUMAN OR ANIMAL CONSUMPTION.

For Reference Only