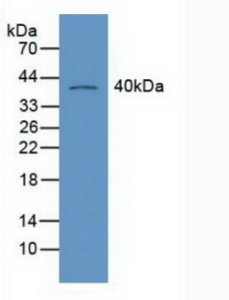
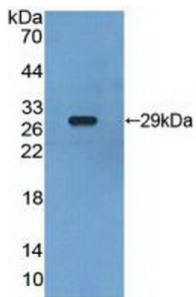


Retinoid X Receptor Gamma (RXRg) Antibody

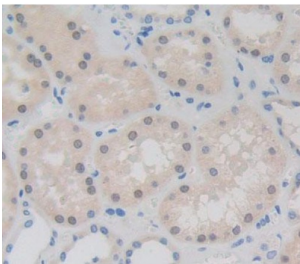
Catalogue No.: abx131386



Western blot analysis of Mouse Heart Tissue.



Western blot analysis of recombinant Human RXRg.



IHC-P analysis of Human Tissue, with DAB staining.

Retinoid X Receptor Gamma Antibody is a Rabbit Polyclonal against Retinoid X Receptor Gamma.

Target: Retinoid X Receptor Gamma (RXRg)

Clonality: Polyclonal

Reactivity: Human

Tested Applications: WB, IHC, IF/ICC

Host: Rabbit

Recommended dilutions: WB: 1-5 µg/ml, IHC: 5-20 µg/ml, IF/ICC: 5-20 µg/ml. Optimal dilutions/concentrations should be determined by the end user.

Conjugation: Unconjugated

Datasheet

Version: 2.0.0
Revision date: 10 Feb 2025



Immunogen:	RXRg (Pro12-Ala220)
Form:	Liquid
Purification:	Purified by antigen-specific affinity chromatography, followed by Protein A affinity chromatography.
Storage:	Aliquot and store at -20°C. Avoid repeated freeze/thaw cycles.
UniProt Primary AC:	P48443 (UniProt , ExPASy)
KEGG:	hsa:6258
String:	9606.ENSP00000352900
Buffer:	0.01 M PBS, pH 7.4, containing 0.05% Proclin-300, 50% glycerol.
Note:	This product is for research use only.

For Reference Only