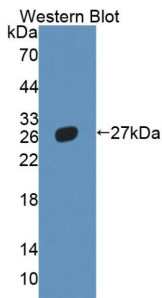
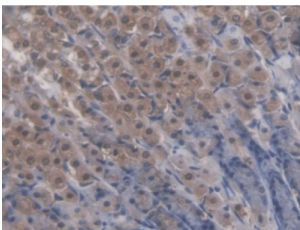


Nuclear Receptor Subfamily 5 Group A Member 2 (NR5A2) Antibody

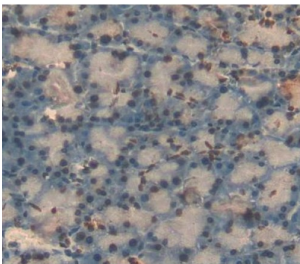
Catalogue No.: abx131388



Western blot analysis of the recombinant protein.



IHC-P analysis of Rat Stomach Tissue, with DAB staining.



IHC-P analysis of pancreas tissue, with DAB staining.

Nuclear Receptor Subfamily 5 Group A Member 2 Antibody is a Rabbit Polyclonal against Nuclear Receptor Subfamily 5 Group A Member 2.

Target: Nuclear Receptor Subfamily 5 Group A Member 2 (NR5A2)

Clonality: Polyclonal

Reactivity: Rat

Tested Applications: WB, IHC, IF/ICC

Host: Rabbit

Recommended dilutions: WB: 0.01-2 µg/ml, IHC: 5-20 µg/ml, IF/ICC: 5-20 µg/ml. Optimal dilutions/concentrations should be determined by the end user.

Datasheet

Version: 3.0.0
Revision date: 13 Mar 2025



Conjugation:	Unconjugated
Immunogen:	LRH1 (Met1-Ala205)
Form:	Liquid
Purification:	Purified by antigen-specific affinity chromatography, followed by Protein A affinity chromatography.
Storage:	Aliquot and store at -20°C. Avoid repeated freeze/thaw cycles.
UniProt Primary AC:	Q9QWM1 (UniProt , ExPASy)
String:	10116.ENSRNOP00000000812
Buffer:	0.01 M PBS, pH 7.4, containing 0.05% Proclin-300, 50% glycerol.
Note:	THIS PRODUCT IS FOR RESEARCH USE ONLY. NOT FOR USE IN DIAGNOSTIC, THERAPEUTIC OR COSMETIC PROCEDURES. NOT FOR HUMAN OR ANIMAL CONSUMPTION.

For Reference Only