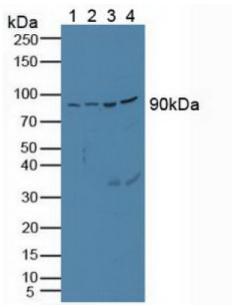
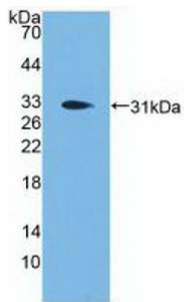


Neuroendocrine Convertase 1 (PCSK1) Antibody

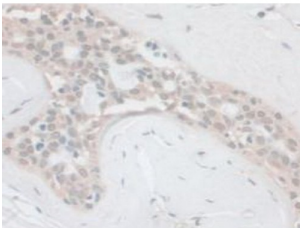
Catalogue No.: abx131429



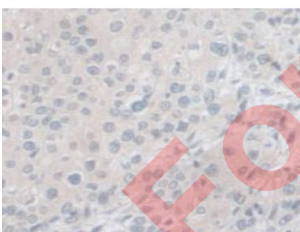
Western blot analysis of (1) Porcine Heart Tissue, (2) Porcine Brain Tissue, (3) Porcine Kidney Tissue and (4) Porcine Liver Tissue.



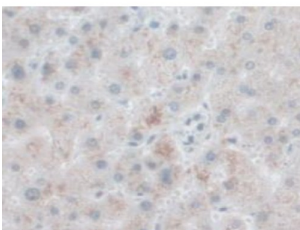
Western blot analysis of recombinant Human PCSK1.



IHC-P analysis of Human Breast Cancer Tissue, with DAB staining.



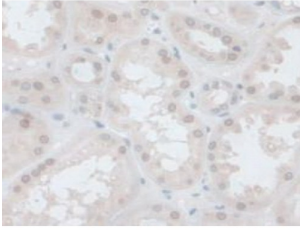
IHC-P analysis of Human Prostate Gland Cancer Tissue, with DAB staining.



IHC-P analysis of Human Liver Tissue, with DAB staining.

Datasheet

Version: 2.0.0
Revision date: 23 Dec 2024



IHC-P analysis of Human Kidney Tissue, with DAB staining.

PCSK1 Antibody is a Rabbit Polyclonal against PCSK1.

Target:	Neuroendocrine Convertase 1 (PCSK1)
Clonality:	Polyclonal
Reactivity:	Human
Tested Applications:	WB, IHC, IF/ICC
Host:	Rabbit
Recommended dilutions:	WB: 0.5-2 µg/ml, IHC: 5-20 µg/ml, IF/ICC: 5-20 µg/ml. Optimal dilutions/concentrations should be determined by the end user.
Conjugation:	Unconjugated
Immunogen:	PCSK1 (Ala500-Asp738)
Form:	Liquid
Purification:	Purified by antigen-specific affinity chromatography, followed by Protein A affinity chromatography.
Storage:	Aliquot and store at -20°C. Avoid repeated freeze/thaw cycles.
UniProt Primary AC:	P29120 (UniProt , ExPASy)
KEGG:	hsa:5122
String:	9606.ENSP00000308024
Buffer:	0.01 M PBS, pH 7.4, containing 0.05% Proclin-300, 50% glycerol.
Concentration:	0.54 mg/ml

Datasheet

Version: 2.0.0

Revision date: 23 Dec 2024



Note: This product is for research use only.

For Reference Only