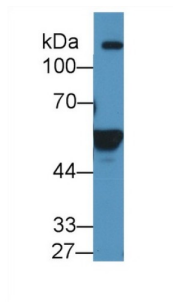
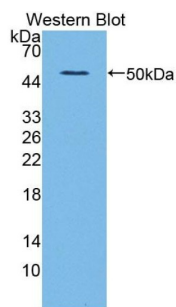


Aldehyde Dehydrogenase 1 Family, Member A2 (ALDH1A2) Antibody

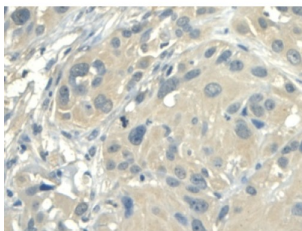
Catalogue No.: abx131533



Western blot analysis of Human K562 cell lysate, using Human ALDH1A2 Antibody (1 µg/ml) and HRP-conjugated Goat Anti-Rabbit antibody ([abx400043](#), 0.2 µg/ml).



Western blot analysis of the recombinant protein.



IHC-P analysis of Human Esophagus, with DAB staining.

ALDH1A2 Antibody is a Rabbit Polyclonal against ALDH1A2.

Target: Aldehyde Dehydrogenase 1 Family, Member A2 (ALDH1A2)

Clonality: Polyclonal

Reactivity: Human

Tested Applications: WB, IHC, IF/ICC

Host: Rabbit

Recommended dilutions: WB: 0.5-2 µg/ml, IHC: 5-20 µg/ml, IF/ICC: 5-20 µg/ml. Optimal dilutions/concentrations should be determined by the end user.

Conjugation: Unconjugated

Datasheet

Version: 2.0.0
Revision date: 03 Dec 2024



Immunogen:	ALDH1A2 (Met1-Ser422)
Form:	Liquid
Purification:	Purified by antigen-specific affinity chromatography, followed by Protein A affinity chromatography.
Storage:	Aliquot and store at -20°C. Avoid repeated freeze/thaw cycles.
UniProt Primary AC:	O94788 (UniProt , ExPASy)
KEGG:	hsa:8854
String:	9606.ENSP00000249750
Buffer:	0.01 M PBS, pH 7.4, containing 0.05% Proclin-300, 50% glycerol.
Note:	This product is for research use only.

For Reference Only