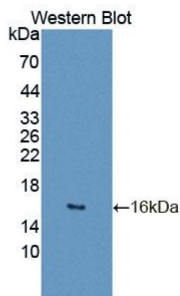
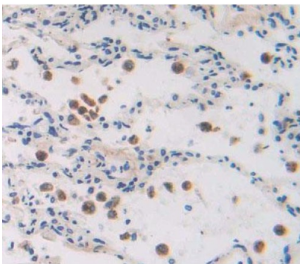


General Transcription Factor IIA, Polypeptide 2 (GTF2A2) Antibody

Catalogue No.: abx131632



Western blot analysis of the recombinant protein.



IHC-P analysis of lung tissue, with DAB staining.

GTF2A2 Antibody is a Rabbit Polyclonal against GTF2A2.

Target:	General Transcription Factor IIA, Polypeptide 2 (GTF2A2)
Clonality:	Polyclonal
Reactivity:	Human
Tested Applications:	WB, IHC, IF/ICC
Host:	Rabbit
Recommended dilutions:	WB: 0.01-2 µg/ml, IHC: 5-20 µg/ml, IF/ICC: 5-20 µg/ml. Optimal dilutions/concentrations should be determined by the end user.
Conjugation:	Unconjugated
Immunogen:	GTF2A2 (Met1-Glu109)
Form:	Liquid
Purification:	Purified by antigen-specific affinity chromatography, followed by Protein A affinity chromatography.
Storage:	Aliquot and store at -20°C. Avoid repeated freeze/thaw cycles.

Datasheet

Version: 3.0.0
Revision date: 23 Feb 2025



Buffer: 0.01 M PBS, pH 7.4, containing 0.05% Proclin-300, 50% glycerol.

Note: This product is for research use only.

For Reference Only